

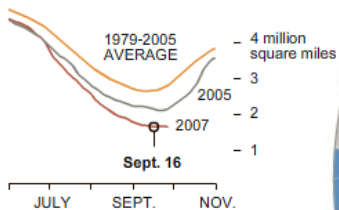
Sea Ice in Retreat

This summer saw a record-breaking loss of Arctic sea ice.

SUMMER SEA ICE ATMOSPHERIC PRESSURE AIR TEMPERATURE CLOUD COVER SOLAR HEATING

SUMMER SEA ICE
 This summer saw a record-breaking loss of Arctic sea ice. Experts attribute the changes to the interaction of wind, weather, ice drift, ocean currents and greenhouse gases.

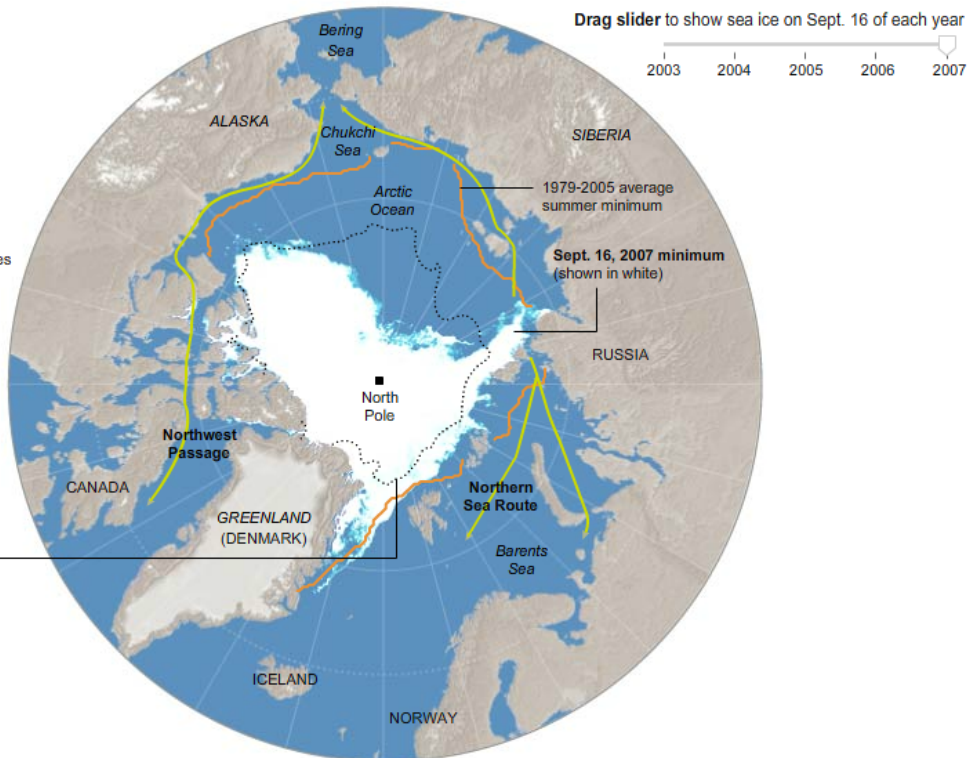
SUMMER SEA ICE EXTENT*



*Sea ice extent is the area of ocean covered by at least 15 percent ice.

PERENNIAL SEA ICE

Ocean within this boundary had been covered with ice year-round since satellite records began in 1979. This summer was the first time that part of the perennial sea ice was open water.



Erin Aigner, Jonathan Corum, Vu Nguyen/The New York Times | [Send Feedback](#)

[TWITTER](#) [LINKEDIN](#) [SIGN IN TO E-MAIL](#) [SHARE](#)

AN EXPERIENCE YOU DON'T WANT TO MISS.

Take full advantage of the world's finest news site with a Digital Subscription to The Times. And continue to access the exclusive stories, videos and multimedia that will feed your imagination and nourish your intelligence.

SEE MY OPTIONS ►

Already a subscriber?
[Log in here.](#)

If you're a home delivery subscriber and need to link your account,
[start here.](#)