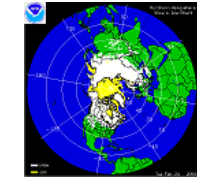


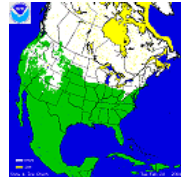


[Home](#) | [Products](#) | [IMS](#) | [Outside Links](#) | [Special Support](#) | [Low Bandwidth Page](#) | [Announcements](#) |

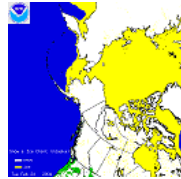
IMS Products



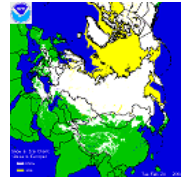
Northern Hemisphere
 Latest
 Yesterday
 Data Archive (2011)
 31 Day Animation



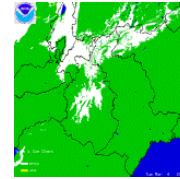
United States
 Latest
 Yesterday
 Data Archive (2011)
 31 Day Animation



Alaska
 Latest
 Yesterday
 Data Archive (2011)
 31 Day Animation

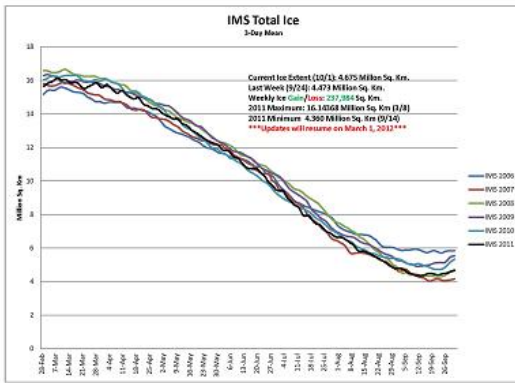


Europe/Asia
 Latest
 Yesterday
 Data Archive (2011)
 31 Day Animation

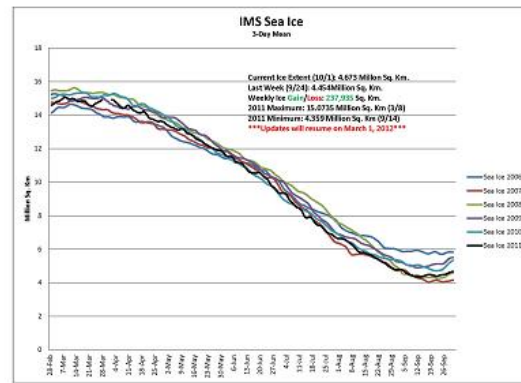


Special Sector: Afghanistan
 Latest
 Yesterday
 Data Archive (2011)
 31 Day Animation

IMS Ice Extent Charts (Explanation of Graphs)



Total Ice
[View chart \(2200 x 1700\)](#)
[Download PDF](#)



Sea Ice Only
[View chart \(2200 x 1700\)](#)
[Download PDF](#)

<p>Interactive Snow Map (Web based GIS Server) More Information: Interactive Multisensor Snow and Ice Mapping System (IMS) About the NIC Snow and Ice Program Past Years: GIF Data Archive ASCII Data Archive (NIC) ASCII and Geotiff Data Archive *</p>	<p>Outside Snow and Ice Links United States NWS/Coop Snow Monitoring Northern Hemisphere Automated Snow and Ice Mapping Southern Hemisphere Automated Snow and Ice Mapping NOHRSC Satellite Products NCEP MMAB Sea Ice CPC Northern Hemisphere Snow Cover based on IMS Rutgers University Global Snow Lab * GSFC MODIS Snow and Ice Images The National Snow and Ice Data Center (NSIDC) * Multisensor Analyzed Sea Ice Extent (NSIDC) * The NRCS NWCC Snotel Maps State of the Canadian Cryosphere * NOAA's Arctic Theme Page Polar View * Community Collaborative Rain, Hail, & Snow Network (CoCoRaHS) * ESA Globsnow *</p> <p style="text-align: right;">* Indicates a link outside the U.S. Government.</p>
---	---

Publications:

"The Interactive Multisensor Snow and Ice Mapping System" by Bruce H. Ramsay ([Adobe PDF 1.2MB](#))

"Prospects for the Interactive Multisensor Snow and Ice Mapping System (IMS)" by Bruce H. Ramsay ([Adobe PDF 565KB](#))

"Enhancements to, and forthcoming developments in the Interactive Multisensor Snow and Ice Mapping System (IMS)" by Sean R. Helfrich ([Adobe PDF 805KB](#))

If you have any comments or suggestions, please E-mail the [National Ice Center Public Affairs Officer](#).



[Home Page](#) | [FOIA](#) | [Disclaimer](#) | [Privacy Act](#) | [Frequently Asked Questions](#)
[Customer Feedback](#) | [Director/CO Biography](#) | [Directions to the NIC](#) | [Contact Us](#)