

- [Get Home Delivery-Bay Area](#)
- [My Account](#)
  - [Manage My Account](#)
  - [My Alerts](#)
  - [Create Alert](#)
  - [Manage Alerts](#)
- Welcome, [75200](#)
- [Log Out](#)
- [Help](#)
- TimesPeople
  
- [Home Page](#)
- [Today's Paper](#)
- [Video](#)
- [Most Popular](#)
- [Times Topics](#)

Search All NYTimes.com


## The New York Times

Friday, April 16, 2010

# News

- [World](#)
- [U.S.](#)
- [N.Y. / Region](#)
- [Business](#)
- [Technology](#)
- [Science](#)
- [Health](#)
- [Sports](#)
- [Opinion](#)
- [Arts](#)
- [Style](#)
- [Travel](#)
- [Jobs](#)
- [Real Estate](#)
- [Autos](#)

**REPUNCTUATE YOUR LIFE.**  
with birth control and fewer periods.



levonorgestrel/ethinyl estradiol combination  
ethinyl estradiol TABLETS

**PLEASE READ IMPORTANT SAFETY INFORMATION:**  
\*While you get 4 periods a year, you're more likely to have bleeding or spotting between periods. This can be slight to a flow like a regular period and should decrease over time.

[Prescribing Information](#)

What Is Seasonique®?

Birth Control Comparison

What to Ask Your OB/GYN

Join and Save

ROLL OVER TO EXPAND ▶

## The Lede

The New York Times News Blog



---

April 15, 2010, 8:57 am

## Views of Volcanic Ash Plume Over Europe

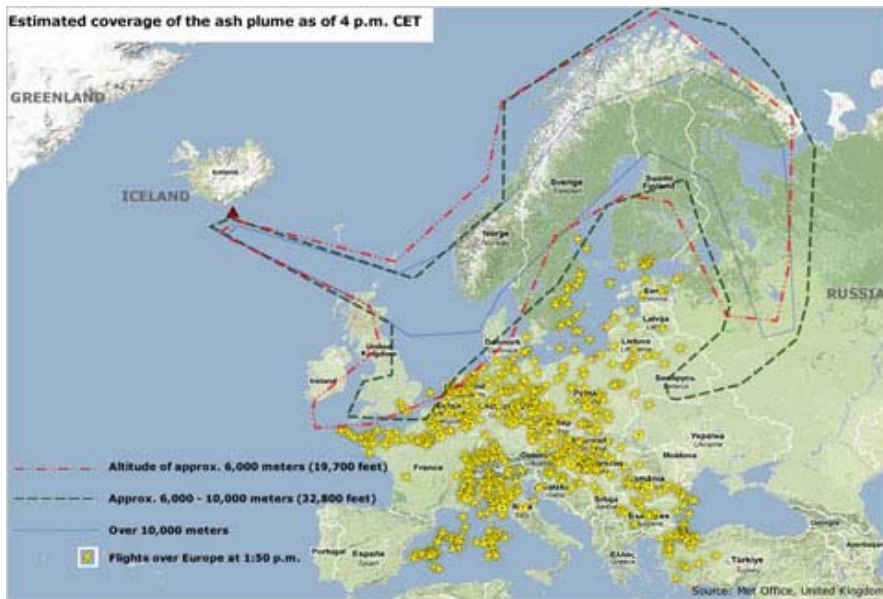
By [ROBERT MACKEY](#)



NASA A photograph from NASA's Terra satellite showing a volcanic ash plume blowing from Eyjafjallajökull volcano in southern Iceland past the Faroe Islands toward northern Scotland and Scandinavia on Thursday. [More NASA images.](#)

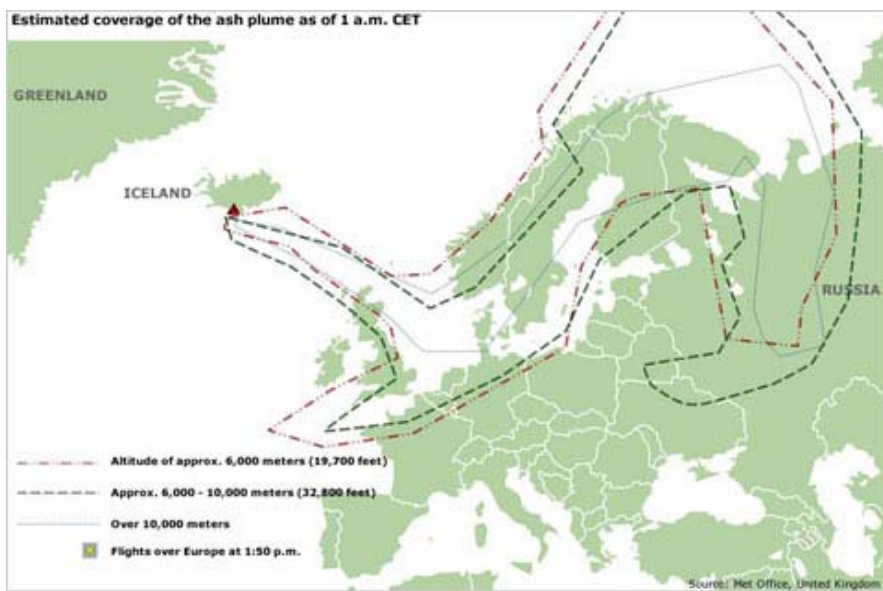
**Updated | 6:23 p.m.** As my colleagues [Nicola Clark and Liz Robbins report](#), a high-altitude cloud of ash drifting south and east from an erupting volcano in Iceland has closed airports in northern Europe. Flights have been canceled because volcanic ash contains silicates, or glass fibers, which can melt inside jet engines, causing them to flame out and stall.

Here is a map showing the spread of the ash plume and the restrictions on air travel on Thursday afternoon, based on [data from Britain's National Weather Service](#), from [the Web site of Spiegel](#), the German magazine:



Spiegel.de ([Enlarged view.](#))

Another map from the same Web site shows the reach of the ash above Europe at 1 a.m. Central European Time.



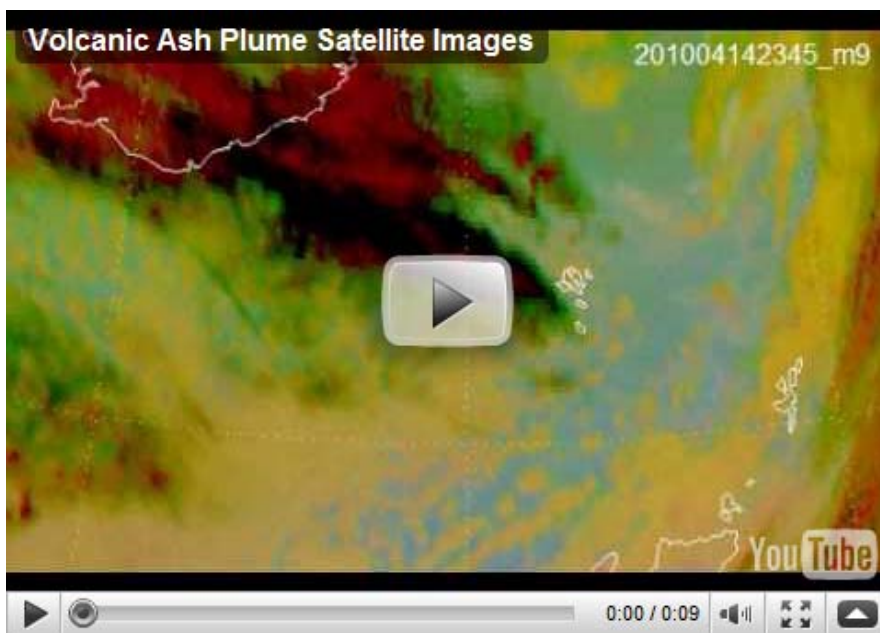
Spiegel.de

The ash is coming from [an eruption of the Eyjafjallajokull volcano](#), located near a glacier of the same name (which, for those not fluent in Icelandic, is pronounced “AYA-fyatla-jo-kutl,” [according to NASA](#) — or [something like this](#)) in southern Iceland, which began erupting last month for the first time in nearly 200 years.



Video of the ash plume and the erupting volcano in Iceland from Britain's ITN.

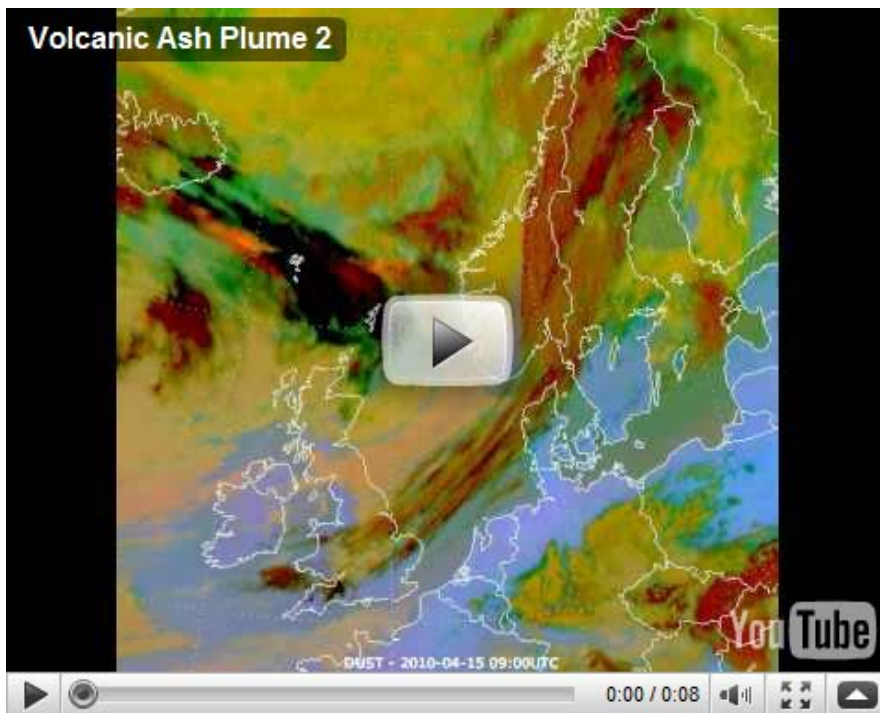
The European Organization for the Exploitation of Meteorological Satellites, which monitors weather patterns from space, has some dramatic images of the ash cloud's movement on [the home page of its Web site](#).



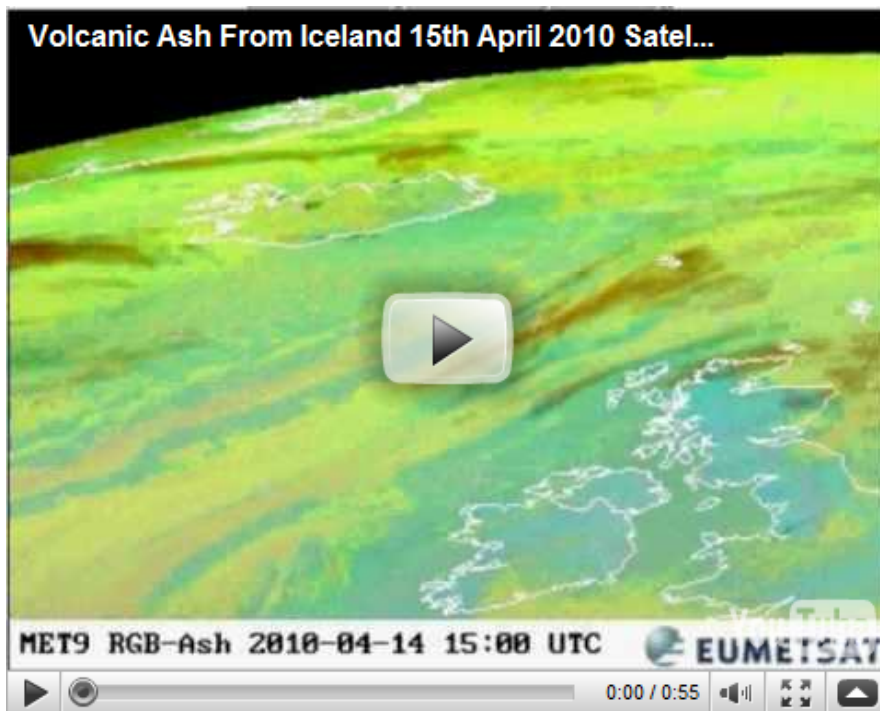
The organization explains:

Meteosat-9 observes the ash cloud from the volcanic eruption under Eyjafjallajökull glacier in Iceland. Initially the cloud shows a distinctive black color, due to ice particles which initially mask the ash signature. As the cloud progresses eastwards the cloud takes a reddish hue, clearly indicating the presence of volcanic ash.

Here is a later view from the same satellite, showing the movement of the ash between 0:00 and 13:30 UCT today:



Another video made from Eumetsat's images was posted on YouTube earlier, as Adam Gabbatt notes [in a live blog tracking the disruption](#) caused by the ash on The Guardian's Web site.



As [The Lede explained last month](#), the [spectacular images of the eruption's early stages](#) had [tourists rushing to the scene](#), though it may not be necessary to hurry, given that the last time there was an eruption at Eyjafjallajokull, in 1821, it continued for two years.



Iriya/Flickr Video of the volcano erupting from [an Icelander's Flickr page](#) with more images of Eyjafjallajokull.

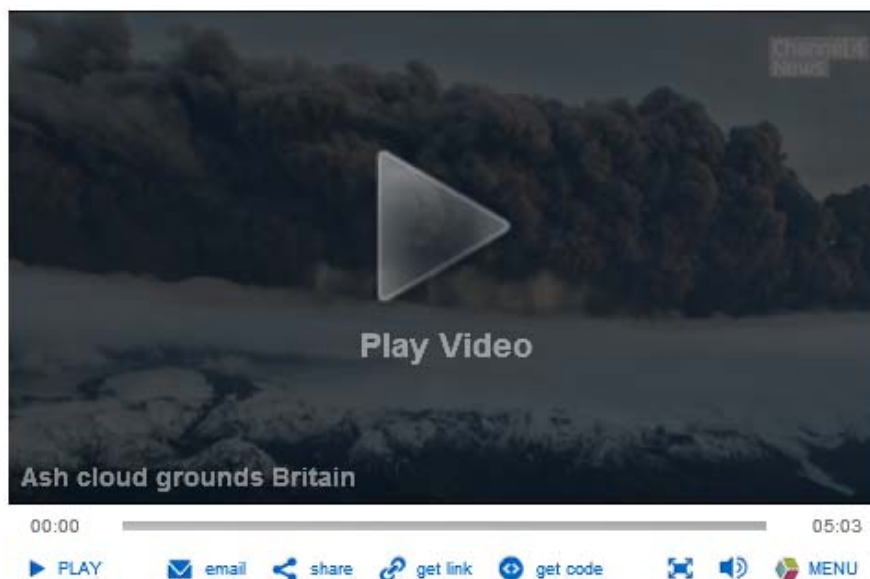
Closer views of the volcano, from [three Web cams](#), can be had online — although one camera is currently down “for maintenance.” A handy interactive graphic from The Guardian shows [how the ash is spreading](#) across European airspace.

The [London Volcanic Ash Advisory Center](#) — part of a global network — is posting [updated volcanic ash advisory maps](#) on its Web site. The most recent map, made at 18:00 GMT is [here](#). Montreal's Volcanic Ash Advisory Center is also [keeping an eye on](#) Eyjafjallajokull.

In Iceland itself, [The Icelandic Review reports](#) that winds pushing the ash east, away from the capital, have allowed [Keflavik airport](#), near the capital, Reykjavik, to remain open, for now, although flights to Europe have been canceled or disrupted. The Review adds:

There is nothing to indicate that the eruption is about to subside. The cloud of smoke rising from the volcano's summit turns black every now and then, resulting in ash fall. The winds blow the ash towards the east.

This video report [from Britain's Channel 4 News](#) looks at the disruption to flights, and explains what has happened to jets in the past that flew through clouds of volcanic ash:



As a reader notes, the ash could bring spectacular sunsets to Europe. Robin Scagell, of the Britain's Society for Popular Astronomy, [told The Daily Mail](#) on Thursday: "Be ready to enjoy some dazzling arrays of colors especially purples and reds looking much stronger than usual. The most amazing sunsets I've ever seen were in Australia after the El Chichon volcano went off in Mexico in 1982. The sky turned an intense purple and even the moon turned blue. We may also see a phenomenon called a Bishop's Ring — a huge brown or blue halo around the sun that was first noticed when the Krakatoa volcano exploded in 1883."

A colleague draws our attention to the fact that Edvard Munch's famous painting, "The Scream," may have been inspired by the experience of such a sunset. A description of the painting [on an art Web site](#) includes this quote from the painter:

I was out walking with two friends. The sun began to set. I felt a breath of melancholy. Suddenly the sky turned blood-red. I paused, deathly tired and leaned on a fence looking out across the flaming clouds over the blue-black fjord and towns. My friends walked on and there I still stood, trembling with fear – and I sensed a great, infinite scream run through nature.

The site adds: "Astronomers now speculate that the red sky he saw might have been caused by the 1883 eruption of the Krakatoa volcano, half a world away in Indonesia, that sent massive dust clouds up into the atmosphere, leading to a series of intense and other spectacular sunsets."

Some observers of volcanic activity in Iceland have even speculated that disturbances to the atmosphere in Europe following [a huge eruption in Iceland in 1783](#) may even have helped incite the French Revolution by destroying crops and breeding discontent. As Paul Simons notes in [an article in London's Times](#) on the possible effects of the ash on Britain's climate, the haze over Europe after that eruption certainly caused fear among the superstitious:

"The summer of the year 1783 was an amazing and portentous one, and full of horrible phenomena," wrote the naturalist Gilbert White, in Hampshire. "The country people look with a kind of superstitious awe at the red louring aspect of the sun thro' the fog."

- [E-mail This](#)
- [Print](#)
- Share Close
  - [Linkedin](#)
  - [Digg](#)
  - [Facebook](#)
  - [Mixx](#)
  - [My Space](#)
  - [Yahoo! Buzz](#)
  - [Permalink](#)
  -

[eyjafjallajokull, iceland](#)

## Related Posts

### From The Lede

- [Icelandic Actors Read Entire Bank Crisis Report Aloud](#)
- [One Word: Eyjafjallajokull](#)

---

Previous post [Icelandic Actors Read Entire Bank Crisis Report Aloud](#)**41**

Next post [Video From British](#)

**Readers' Comments**[Leaders' Debate on Domestic Issues](#)[Post a Comment »](#)

- [All Comments](#)
- [Highlights](#)
- [Readers' Recommendations](#)
- [Replies](#)
- Oldest
- [Newest](#)

1 of 2 [Next](#)[1.](#)

Technic Ally

Toronto

April 15th, 2010

7:26 am

How many of your readers would not be fluent in Icelandic?

[Recommend](#) Recommended by 7 Readers[2.](#)

KE

Europe

April 15th, 2010

7:26 am

Obviously this is part of a plan for Icelanders to wreak revenge on Europe for the Icesave debacle.

[Recommend](#) Recommended by 16 Readers[3.](#)[AER](#)

Cambridge, England

April 15th, 2010

7:26 am

Despite our leaps and bounds in technology and engineering nature always wins, and it always amazes me that it still surprises people.

[Recommend](#) Recommended by 12 Readers[4.](#)

Architect

NYC

April 15th, 2010

7:26 am

Well, at least we can look forward to spectacular pictures of sunsets from western Europe tonight.

[Recommend](#) Recommended by 3 Readers[5.](#)

sas

new york

April 15th, 2010

7:29 am

"When Katla erupted in 1755, it blew like a torch into the glacier above, releasing a hellish torrent of instantly melted water, equal, in one estimation, to the combined outflows of the Amazon, Mississippi, Nile and Yangtze rivers. Everything that lay between Katla and the sea was erased at a stroke. Feel the magic, indeed.

"Eyjafjalla has blown three times in the past thousand years," says Dave McGarvie, a volcanologist at Britain's Open University – "in 920, 1612 and [around] 1823. Each time, it set off Katla."



“Katla ... is a vicious volcano that could cause both local and global damage,” adds Pall Einarsson, a geophysicist at the University of Iceland – global, because an eruption from Katla could trigger widespread cooling.

“When volcanic ash reaches the stratosphere, it remains for a long time,” Gary Hufford, a scientist at the U.S. National Weather Service, told a newspaper. “The ash becomes a very effective block of the incoming solar radiation, thus cooling the atmosphere's temperatures.”

When Katla went off in the 1700s, he said, the U.S. suffered a winter so cold that the Mississippi River froze as far south as New Orleans.

[Recommend](#) Recommended by 21 Readers



Robert Mackey  
Reporter, NYT.com  
April 15th, 2010  
7:29 am

Can you please let us know where this material is from? If it is an article on the Web, a link would be great.

[6.](#)

[tired](#)

Cincinnati  
April 15th, 2010  
7:29 am

so for two years no one will be able to fly in europe HA!

[Recommend](#) Recommended by 1 Readers

[7.](#)

Geep  
Skien, Norway  
April 15th, 2010  
7:38 am

Who knew there was so much Schadenfreude in Cincinnati?

[Recommend](#) Recommended by 28 Readers

[8.](#)

Aslak  
Oslo, Norway  
April 15th, 2010  
7:49 am

I believe sas' quotation is from the Times:

<http://www.timesonline.co.uk...>

Here in Norway it looks like all air traffic is grounded at least until Sunday -if the eruption continues for a long time things might get interesting -the economic impact will be huge. And how will we get home tourists that are now in Thailand, the US or other distant countries?

[Recommend](#) Recommended by 7 Readers

[9.](#)

Scott  
NYC  
April 15th, 2010  
7:49 am

Since Britain declared Iceland a terrorist state, isn't this an act of war?

[Recommend](#) Recommended by 6 Readers

[10.](#)

Dude 69  
Dude-land  
April 15th, 2010  
7:54 am

This is missing in many of the coverages - the guys who monitor volcanic ash ongoing in this sector of the world: the London VAAC (Volcanic Ash Advisory Centre) <http://www.metoffice.gov.uk/aviation/vaac/> which is part of a global network of monitoring institutions. They are associated with ICAO and IATA and WOVO.

If I remember right then most short-haul planes don't fly at that altitude, however silicate ash in turbines is a risk you don't want to play with, as is abrasion and thus frosting of the pilot's windows.

Ash advisories are actually quite common, just not in this region.

-D69

[Recommend](#) Recommended by 4 Readers

☪

Robert Mackey  
Reporter, NYT.com  
April 15th, 2010  
7:54 am

Thanks - we have a link to the London VAAC above (that is where the British weather service maps come from), but we'll make that more clear.

[11.](#)

sas

new york

April 15th, 2010  
8:05 am

RM -- #5 quote is from march 27 globe & mail

<http://www.theglobeandmail.com...>

[Recommend](#) Recommended by 0 Readers

[12.](#)

FG

Chicago

April 15th, 2010  
8:05 am

But, unlike Cincinnati residents, Europeans can take trains to their destinations.

[Recommend](#) Recommended by 32 Readers

[13.](#)

WBE

Bruges, Belgium  
April 15th, 2010  
8:25 am

No airplanes to spot above Belgium. All airports here remain closed until tomorrow 6.30pm.

[Recommend](#) Recommended by 1 Readers

[14.](#)

sas

new york

April 15th, 2010  
8:26 am

#6, 8, 11. the big shoe yet to drop (pop!) is the more dangerous volcano, Latla. evidence is that all 3 times E.... erupted, latla followed.

yet i can't find a more recent reference to this terrifying probability later than a week or so ago -- before yesterday's E ruption.

what's going on with this? a news blackout on this terrifyingly real probability? can anyone find a reference to the likelihood of latla popping more recent than the following (like, today???)

<http://content.usatoday.com...>

[Recommend](#) Recommended by 0 Readers



Robert Mackey  
Reporter, NYT.com  
April 15th, 2010  
8:26 am

The other volcano is Katla, not Latla - and there have been many recent reports about it.

[15.](#)

sas

new york

April 15th, 2010  
8:27 am

the AP from usatoday 3/25 -- before yesterday's eruption turned the conjecture below into a 100% probability, based upon last 3 E rptions. latla followed every time, plunging the planet into a prolonged frigid winter which "froze the mississippi river as far south as new orleans.":

"Lava spews out of the Eyjafjallajokull volcano in Iceland on March 21.

The small volcano eruption that forced more than 600 people to flee their homes in Iceland over the weekend could set off a larger volcano.

CAPTIONBy Fior Kjartansson, AFP/Getty Images

The potential eruption of Iceland's volcano Katla would likely send the world, including the USA, into an extended deep freeze.

"When Katla went off in the 1700s, the USA suffered a very cold winter," says Gary Hufford, a scientist with the Alaska Region of the National Weather Service. "To the point, the Mississippi River froze just north of New Orleans and the East Coast, especially New England, had an extremely cold winter.

"Depending on a new eruption, Katla could cause some serious weather changes."

Eyjafjallajokull, the Icelandic volcano that has continued to belch lava, ash and steam since first erupting last weekend, isn't the direct problem. It's Katla, the noisier neighbor, that's the concern. If lava flowing from Eyjafjallajokull melts the glaciers that hold down the top of Katla, then Katla could blow its top, pumping gigantic amounts of ash into the atmosphere.

Scientists say history has proven that whenever the Eyjafjallajokull volcano erupts, Katla always follows -- the only question is how soon.

"If it (Eyjafjallajokull) continues to belch, then you worry," says Hufford.

What's key in having volcanic eruptions affect the weather is both the duration of the eruption, and how high the ash gets blasted into the stratosphere, according to Hufford.

For example, he says, Mount Pinatubo pumped ash for two days in 1991, and spewed it 70,000 feet into the stratosphere. This dropped temperatures worldwide about four degrees for about a year.

"When volcanic ash reaches the stratosphere, it remains for a long time," reports Hufford. "The ash becomes a very effective block of the incoming solar radiation, thus cooling the atmosphere's temperatures."

Scientists are continuing to monitor Eyjafjallajokull for signs of further activity.

Contributing: Associated Press

By Doyle Rice

[Recommend](#) Recommended by 2 Readers

[16.](#)

Tony W

Brooklyn

April 15th, 2010

8:47 am

In 1784 (perhaps the actual eruption you were referring to was), the volcanic fissures at Lakigigar erupted nearly continuously for a year. The ash cloud deprived New England of a summer. Ben Franklin himself makes note of this fact. The island's population was decimated. The air was toxic with sulfur, the animals asphyxiated or poisoned by their grazing lands, so many of those people who couldn't get out of Iceland simply starved from the death of agriculture. Some of course were buried in lava. This was not a "Hlaup", or subglacial eruption, this didn't cause floods of water but lava itself, engulfing much of the southern part of Iceland..

[Recommend](#) Recommended by 1 Readers

[17.](#)

George

Manhattan

April 15th, 2010

8:47 am

A shutdown of more than a few days could cripple some of the low-cost airlines which rely on a steady flow of full plane trips.

Could also soon have a downward effect on the cost of jet fuel futures.

Probably less economic impact on most sectors as the disruption mainly affects air passengers and very high-end cargo trade. Won't have much of any effect on most bulk cargo which travels by sea, truck and rail.

Depending on duration and intensity of the ash outflow -- it will be very interesting to observe how global weather patterns are impacted.

[Recommend](#) Recommended by 1 Readers

[18.](#)

Nira

NYC

April 15th, 2010

8:55 am

re #15: So, we don't have to worry about global warming until next year!

[Recommend](#) Recommended by 4 Readers

[19.](#)

Ned

NYC

April 15th, 2010

9:06 am

Trying to parse "Eyjafjallajokull" makes my brain hurt. Could the Times please give some help on the pronunciation?

[Recommend](#) Recommended by 3 Readers

[20.](#)

Robert Mackey

Reporter, nytimes.com

April 15th, 2010

9:06 am

You must have read past it, but it is in the second paragraph of the post above.

[20.](#)

[bparno](#)

babylon

April 15th, 2010

10:48 am

So here we are again at the mercy of the mother of all volcanoes, just when we were heating up, it looks like cool weather may be coming. What a spectacle of the mysteries of our planet.

[Recommend](#) Recommended by 0 Readers

[21.](#)

sas

new york

April 15th, 2010

10:48 am

18. assuming we don't freeze to death first.

[Recommend](#) Recommended by 0 Readers

[22.](#)

jkoch

Tampa

April 15th, 2010

10:48 am

Will this ash cloud eventually affect flights in the northern U.S.? How long will this take to occur?

[Recommend](#) Recommended by 0 Readers

[23.](#)

Ulrich

Upstate NY

April 15th, 2010

10:48 am

Will it contribute to global cooling for a year or two?

[Recommend](#) Recommended by 0 Readers

[24.](#)

Chris

Brooklyn

April 15th, 2010

10:52 am

For the second time, you've gotten the pronunciation wrong. The P is erroneous. It's more like an unaspirated T or D. Also the double LL at the end follows the same rules for the double in the middle.

You wrote: AYA-feeyapla-yurkul. Using your system, I'd go with AYA-feeya\*t\*la-yurkutl. Or better: AY-uh-FYAD-la-yuh-kuhdl.

[Recommend](#) Recommended by 2 Readers



Robert Mackey

Reporter, nytimes.com

April 15th, 2010

10:52 am

Pronunciation guides are a rough science, at best. The one we're using comes from The Associated Press, but if you can explain why yours is better, we'll use it.

[25.](#)

[AmiBlue](#)

Oklahoma

April 15th, 2010

10:54 am

Interesting article. Thanks.

[Recommend](#) Recommended by 0 Readers

1 of 2 [Next](#)

## Post a Comment

You are currently logged in as 75200.

Display Name ([What's this](#))

Location

Characters Remaining: 5000

Comment (Required)

Comments are moderated and generally will be posted if they are on-topic and not abusive. For more information, please see our [Comments FAQ](#).

Ads by Google

what's this?

### **A 9mm is False Protection**

Discover What Survivalist Masters & The Army Don't Want You To Know  
[www.CloseCombatTraining.com](http://www.CloseCombatTraining.com)

### Search This Blog

Previous post [Icelandic Actors Read Entire Bank Crisis Report Aloud](#) Next post [Video From British Leaders' Debate on Domestic Issues](#)

**TRILIPIX**  
 (fenofibric acid)  
 delayed-release capsules

GET THE PICTURE NOW  
 WATCH VIDEO

Prescribing Information Medication Guide TRILIPIX.com

**Talk to your doctor about managing the 3 main parts of your cholesterol with TRILIPIX.**

TRILIPIX is a prescription medication used along with diet to lower triglycerides and raise HDL (good) cholesterol in people with abnormal cholesterol, at high risk of heart disease and taking a statin medicine to manage LDL (bad) cholesterol. TRILIPIX has not been shown to prevent heart attacks or stroke more than a statin alone.

**Important Safety Information**

- TRILIPIX® (fenofibric acid) should not be taken by people with liver, gallbladder, or severe kidney disease, nursing mothers, or those allergic to any product ingredient.
- Unexplained muscle pain, tenderness, or weakness, particularly when occurring with tiredness and fever.

### Recent Posts

April 15

[\(7\)](#)

#### [Video From British Leaders' Debate on Domestic Issues](#)

The leaders of Britain's three largest parties face-off live on British television at 8:30 p.m. local time (3:30 p.m. ET) on Thursday.

April 15

[\(41\)](#)

#### [Views of Volcanic Ash Plume Over Europe](#)

The high-altitude ash plume coming from a volcano in Iceland, which has disrupted air travel, can be seen in video, webcam and satellite images.

April 14

[\(5\)](#)

#### [Icelandic Actors Read Entire Bank Crisis Report Aloud](#)

Actors at the Reykjavik City Theatre are in the middle of an ambitious, if not particularly dramatic, effort to read the entire text of a new 2,250-page report on the causes of Iceland's banking crisis to the nation.

April 14

[\(31\)](#)

#### [Vandals Attack West Bank Mosque](#)

Palestinians in a West Bank town awoke on Wednesday to find a blue star of David painted on the outside of their mosque, after what a local resident described as an attack by Israeli settlers who live nearby.

April 14

[\(12\)](#)

#### [Video of Earthquake Damage in China](#)

Chinese state television broadcast images of the damage caused by a powerful earthquake in western China that has killed at least 400 people, injured 10,000 and left many others buried under debris on Wednesday.

### **What We're Reading**

spiegel.de

#### [Court to Decide if East Germans are an Ethnic Group](#)

rferl.org

#### [Russian Paper Calls 22 Women Potential Suicide Bombers](#)

ynetnews.com

#### [ElBaradei Calls Gaza 'World's Biggest Prison'](#)

BBC

#### [Hearing Set on Serbia's Request to Extradite Former Bosnian Official From U.K. on War Crimes Charges](#)

National Security Archives

#### [Kissinger Blocked Demarche on International Assassinations](#)

### **About The Lede**

The Lede is a news blog that remixes the day's top stories, adding information gleaned from Web sites around the world or gathered through original reporting by writers, editors and readers of The New York Times, to provide fresh perspectives on events and to draw readers in to the world-wide conversation about the news taking place online.

Readers are encouraged to take part in the blogging by using the comments threads to suggest links to relevant

material elsewhere on the Web or by submitting eyewitness accounts, photographs or video of news events. [Read more.](#)

## About The Lede Blogger

Robert Mackey is The Lede's editor and main blogger. [Read more.](#)

## Archive

Select Month -

## Subscribe

- [The Lede RSS](#)

## Blogroll

### Analysis, Features and Documentaries

- [BBC Panorama](#)
- [BBC Radio 4](#)
- [Big Picture](#)
- [Bill Moyers Journal](#)
- [Frontline](#)
- [Have I Got News For You](#)
- [Newsnight](#)
  
- [PBS NewsHour](#)
- [Room for Debate](#)
- [Slate](#)
- [The Daily Show](#)
- [The New Yorker](#)
- [Vanity Fair](#)

### Blogs

- [Abu Muqawama](#)
- [Arabist](#)
- [At War](#)
- [Ben Smith](#)
- [Blogworld](#)
- [Channel 4 News Blog](#)
- [China Digital Times](#)
- [City Room](#)
- [CNN Wire](#)
- [Coteret](#)
- [Cuminet](#)
- [Danger Room](#)
- [Foreign Policy: Passport](#)
- [Gary Sick](#)
- [Global Voices](#)
- [Ground Report](#)
- [Heresy Corner](#)
- [Iranian Progressives in Translation](#)
- [Jarret Brachman](#)



- [Jonathan Turley](#)
- [Kottke](#)
  
- [Laura Rozen](#)
- [Lens](#)
- [Michael Tomasky](#)
- [Murketing](#)
- [New Yorker's News Desk](#)
- [Newsy](#)
- [Now Lebanon](#)
- [NYRB Blog](#)
- [NYT: Moscow](#)
- [Robin Wright](#)
- [Saudi Jeans](#)
- [Small Wars Journal](#)
- [Strange Maps](#)
- [Talking Points Memo](#)
- [The Caucus](#)
- [The Plank](#)
- [The Two-Way](#)
- [Think Tank](#)
- [Threat Level](#)
- [Web News, France 24](#)

#### News Sites

- [Al Jazeera \(English\)](#)
- [Al Masry Al Youm](#)
- [ANSA \(English\)](#)
- [Arab News](#)
- [Asharq Al-Awsat](#)
- [Asian Age](#)
- [BBC News](#)
- [BBC World Service](#)
- [Breaking News Online](#)
- [CBC](#)
- [Channel 4 News](#)
- [Clarín](#)
- [CNN](#)
- [Corriere della Sera](#)
- [Corriere Della Sera \(English\)](#)
- [Daily Star, Lebanon](#)
- [Dawn](#)
- [El Mundo](#)
- [El País](#)
- [Financial Times](#)
- [Globo.com](#)
- [Google News](#)
- [Guardian.co.uk](#)
- [Haaretz](#)
- [IBNLive.com](#)
- [Irish Times](#)
- [Lanacion.com](#)
- [LATimes.com](#)

- [Le Monde](#)
- [McClatchy](#)
- [MSNBC](#)
- [NDTV](#)
- [Newsmap](#)
- [NPR](#)
- [O Globo](#)
- [ProPublica](#)
- [Rayogram/News](#)
- [Reuters](#)
- [Russia Today](#)
- [Soitu](#)
- [Spiegel \(English\)](#)
- [Sydney Morning Herald](#)
- [Tehran Bureau](#)
- [The Associated Press](#)
- [The Globe and Mail](#)
- [The Local \(Berlin\)](#)
- [The Mail and Guardian](#)
- [The National](#)
- [The New York Times](#)
- [The Wall Street Journal](#)
- [The Wires: A.P.](#)
- [The Wires: Reuters](#)
- [Timesonline.co.uk](#)
- [Washingtonpost.com](#)
- [ZDF](#)

#### News Video

- [Al Jazeera Video](#)
- [AP Video](#)
- [BBC News Video](#)
- [BBC One Minute World News](#)
- [Channel 4 News Video](#)
- [Cine Institute](#)
- [CitizenTube](#)
  
- [Guardian Video](#)
- [ITN Video](#)
- [Magma](#)
- [NYT.com Video](#)
- [NYT.com Video](#)
- [Pathe Newsreel Archive](#)
- [Reuters Video](#)

#### Breaking News Alerts by E-Mail



Sign up to be notified when important news breaks.

[info@californiaskywatch.com](mailto:info@californiaskywatch.com)

[Change E-mail Address](#) | [Privacy Policy](#)

---



## Peeking inside the iPad

ALSO IN BUSINESS »

[Conan O'Brien will move to TBS](#)

[In-flight food tries to be tasty](#)

**nytimes.com**

**BUSINESS**

Ads by Google

[what's this?](#)

### **911 Preparedness Kits**

Stay Safe 72 Hours After Disaster Buy Directly from the Manufacturer.

[www.QuakeKare.com](http://www.QuakeKare.com)

[Home](#)

- [World](#)
- [U.S.](#)
- [N.Y. / Region](#)
- [Business](#)
- [Technology](#)
- [Science](#)
- [Health](#)
- [Sports](#)
- [Opinion](#)
- [Arts](#)
- [Style](#)
- [Travel](#)
- [Jobs](#)
- [Real Estate](#)
- [Autos](#)
- [Back to Top](#)

[Copyright 2010 The New York Times Company](#)

- [Privacy](#)
- [Terms of Service](#)
- [Search](#)
- [Corrections](#)
- [RSS](#)
- [First Look](#)
- [Help](#)
- [Contact Us](#)
- [Work for Us](#)
- [Advertise](#)

- [Site Map](#)