



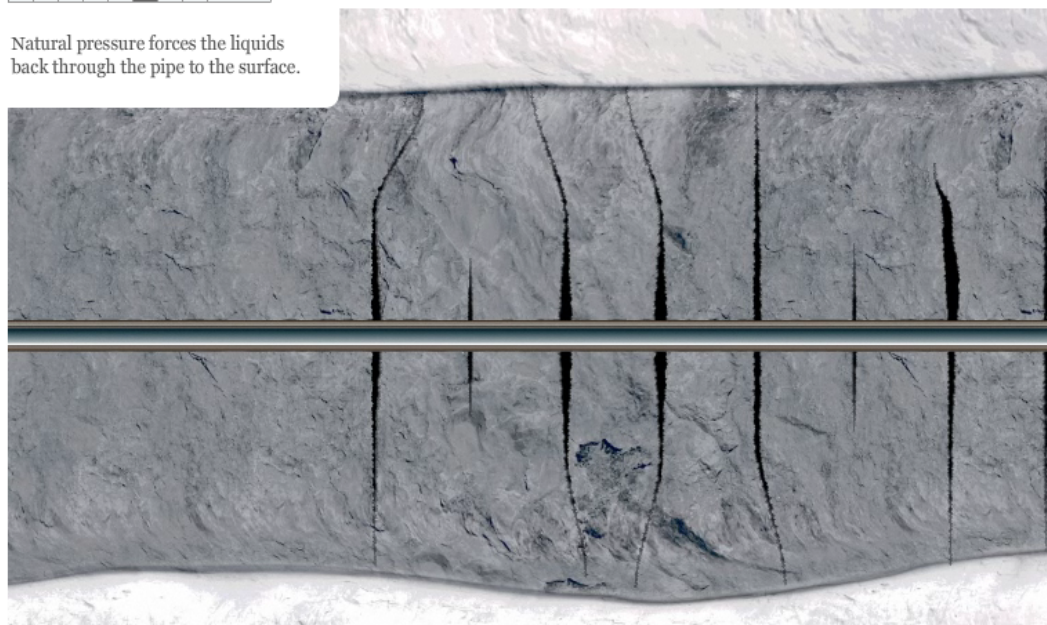
Published: February 26, 2011

Extracting Natural Gas From Rock

A look at the process and hazards of hydraulic fracturing.

1 2 3 4 5 6 7 8 NEXT ▶

Natural pressure forces the liquids back through the pipe to the surface.



Problems

Most of the toxic wastewater returns to the surface, sometimes with radioactive material at levels thousands of times greater than drinking water standards permit.

Waste can be stored on site in a pit or in tanks, which can leak in many ways: pond berms, pipes, liners may fail. Heavy rain can cause ponds to overflow.

GRAHAM ROBERTS, MIKA GRÖNDAHL and BILL MARSH/THE NEW YORK TIMES | [Send Feedback](#)

Sources: Dr. Anthony R. Ingraffea, Cornell University; gas industry publications

RECOMMEND

TWITTER

SIGN IN TO E-MAIL

SHARE

Related Links

[Regulation Lax as Gas Wells' Tainted Water Hits Rivers](#)