

Analog Meters

Overview

Gas and electric meters record the total amount of gas or electricity consumed, just as a car's odometer records mileage. Meters are highly accurate instruments. In fact, our accuracy record is measured and found to be correct more than 99 percent of the time. You can also check the accuracy of the meter by learning to read your own meters. Your meter readings can be obtained by logging on to your PGE.com My Account, or by reading the meter itself. Here's how:

Print

How to Read Analog Meters

Electric meter



Gas meter



SmartMeter™
Gas Meter



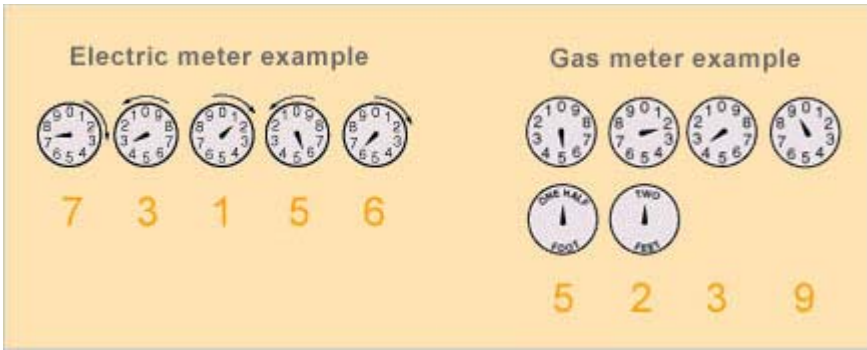
Traditional
Gas Meter

Read all the dials, except the testing dials on a gas meter.
(Testing dials have no numbers)

If the hand on any dial is between two numbers, read the smaller number

If the hand appears directly on a number, read that number only if the hand to the right is on or just past zero; if the hand to the right is not on zero, take the smaller number

To help us keep track of how much energy you use, please keep your meters accessible and clear of obstruction



*PG&E refers to Pacific Gas and Electric Company, a subsidiary of PG&E Corporation. © 2011 Pacific Gas and Electric Company. All rights reserved.