

- Emergency
- Contact PG&E
- Service Guarantees
- Start, Stop & Move Service
- More Services
- Brochures & Forms
- Financial Assistance
- SmartMeter™
- Getting SmartMeter™
- Using SmartMeter™
- SmartMeter™ Benefits
- FAQ and Help
- Customer Stories
- Program Updates
- Analog Meters
- Outage & Energy Status
- Departing Load
- Energy Choice

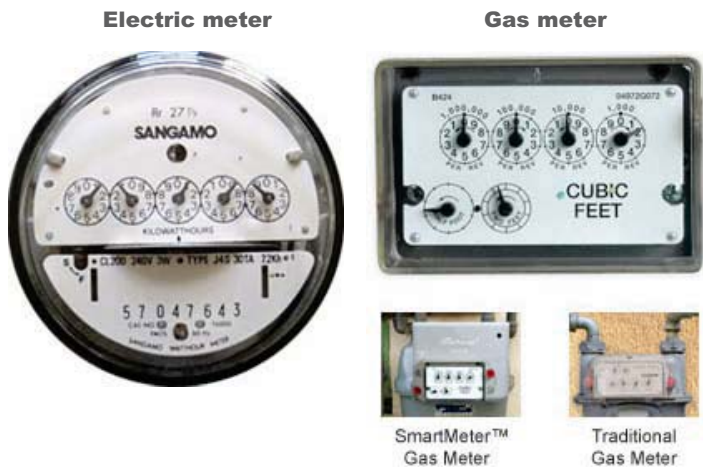
Analog Meters



Overview

Gas and electric meters record the total amount of gas or electricity consumed, just as a car's odometer records mileage. Meters are highly accurate instruments. In fact, our accuracy record is measured and found to be correct more than 99 percent of the time. You can also check the accuracy of the meter by learning to read your own meters. Your meter readings can be obtained by logging on to your PGE.com My Energy, or by reading the meter itself. Here's how:

How to Read Analog Meters

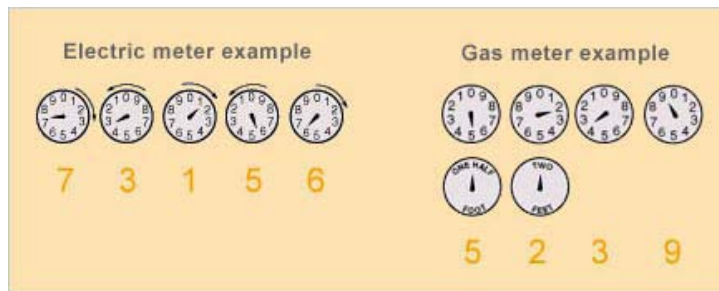


Read all the dials, except the testing dials on a gas meter. (Testing dials have no numbers)

If the hand on any dial is between two numbers, read the smaller number

If the hand appears directly on a number, read that number only if the hand to the right is on or just past zero; if the hand to the right is not on zero, take the smaller number

To help us keep track of how much energy you use, please keep your meters accessible and clear of obstruction



Reading Your SmartMeter™

SmartMeter™ electric meters record the total amount of electricity consumed.

[Learn how to read SmartMeter™ electric meters](#)

Analog Meter Reading Schedule

Find out when PG&E meter readers will read your analog gas and electric meters.

[See the current meter reading schedule](#)

[Meter Reading Information for Residential Customers](#)

When is your SmartMeter™ device expected to come?

Find out when your SmartMeter™ device is expected to come:

[See the complete installation schedule](#)