

weather.gov



# National Oceanic and Atmospheric Administration's National Weather Service



[Site Map](#) [News](#) [Organization](#)

Search   NWS  All NOAA

### Local forecast by "City, St"

City, St

### Sign-up for Email Alerts

XML  RSS Feeds

### Warnings

Current  
By State/County...  
UV Alerts

### Observations

Radar  
Satellite  
Snow Cover  
Surface Weather...  
Observed Precip

### Forecasts

Local  
Graphical  
Aviation  
Marine  
Hurricanes  
Severe Weather  
Space Weather  
Fire Weather

### Text Bulletins

By State  
By Message Type  
National

### Forecast Models

Numerical Models  
Statistical Models...  
MOS Prod  
GFS-LAMP Prod

### Climate

Past Weather  
Predictions

### Weather Safety

Weather Radio  
Hazard Assmt...  
StormReady /  
TsunamiReady  
Skywarn™

### Education/Outreach

### Information Center

Tsunamis  
Publications...

### Contact Us

FAQ  
Comments...

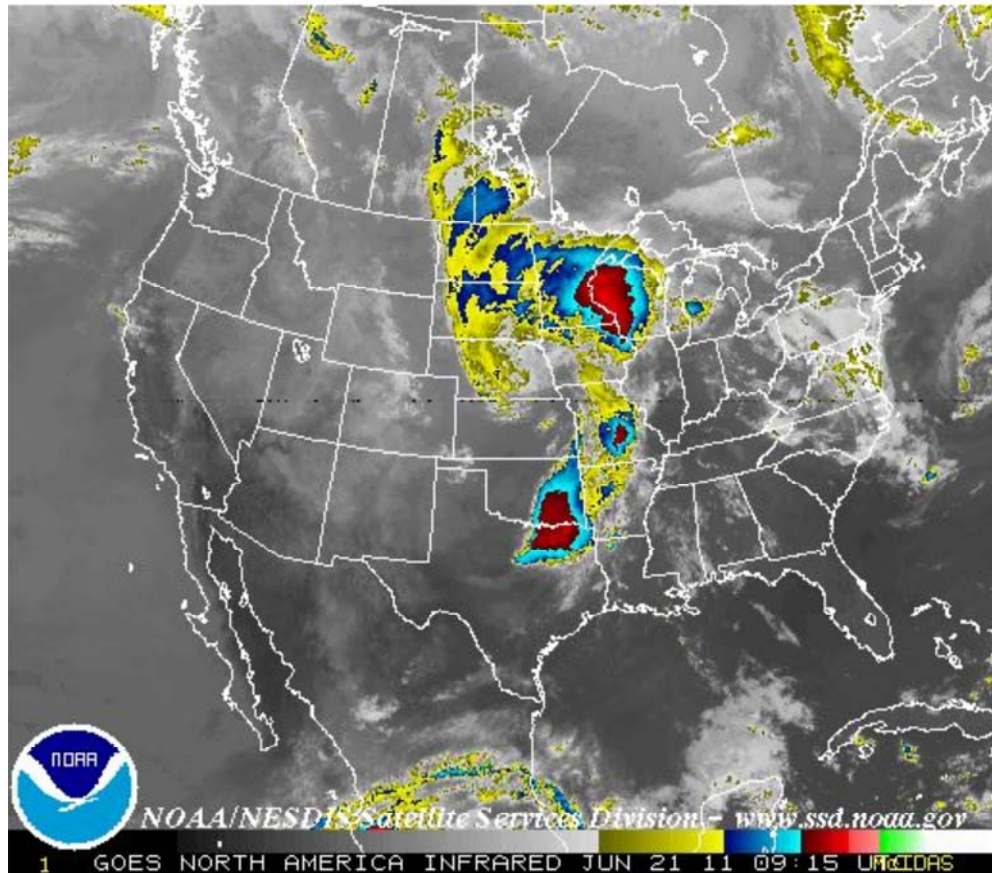


[Home](#) > [Satellite](#) > 24 hour loop

This loop contains the past 24 hours of images of the United States, one image per hour taken from a NOAA satellite. These images are taken in the infrared band of light and show relative warmth of objects. Colder objects are brighter and warmer objects are darker. Lower layers of clouds, generally warmer and lower in altitude, are colored gray. Colder and generally higher clouds tops are highlighted in colors. IR imagery is useful for determining cloud features both at day and night.

[Warnings & Forecasts](#) | [Graphical Forecasts](#) | [National Maps](#) | [Radar](#) | [Water](#) | [Air Quality](#) | [Satellite](#) | [Climate](#)

**Infrared**      **Visible**      **Water Vapor**



NOAA/NESDIS Satellite Services Division - [www.ssd.noaa.gov](http://www.ssd.noaa.gov)

1 GOES NORTH AMERICA INFRARED JUN 21 11 09:15 UTC/CDAS

[Static](#)   [24 hour Loop](#)   [12 hour Loop](#)   [6 hour Loop](#)   [3 hour Loop](#)

[Alaska](#) | [Hawaii](#) | [Guam](#) | [Puerto Rico](#) | [American Samoa](#) | [Details](#)

---

US Dept of Commerce  
National Oceanic and Atmospheric Administration  
National Weather Service  
1325 East West Highway  
Silver Spring, MD 20910  
Page Author: NWS Internet Services Team  
Page last Modified: 20 April, 2010 11:34 AM

[Disclaimer](#)  
[Information Quality](#)  
[Credits](#)  
[Glossary](#)

[Privacy Policy](#)  
[Freedom of Information Act \(FOIA\)](#)  
[About Us](#)  
[Career Opportunities](#)