

weather.gov



National Oceanic and Atmospheric Administration's National Weather Service



[Site Map](#) [News](#) [Organization](#)

Search NWS All NOAA

Local forecast by "City, St"

City, St

Sign-up for Email Alerts

[RSS Feeds](#)

Warnings

Current
[By State/County...](#)
[UV Alerts](#)

Observations

[Radar](#)
[Satellite](#)
[Snow Cover](#)
[Surface Weather...](#)
[Observed Precip](#)

Forecasts

[Local](#)
[Graphical](#)
[Aviation](#)
[Marine](#)
[Hurricanes](#)
[Severe Weather](#)
[Space Weather](#)
[Fire Weather](#)

Text Bulletins

[By State](#)
[By Message Type](#)
[National](#)

Forecast Models

[Numerical Models](#)
[Statistical Models...](#)
[MOS Prod](#)
[GFS-LAMP Prod](#)

Climate

[Past Weather](#)
[Predictions](#)

Weather Safety

[Weather Radio](#)
[Hazard Assmt...](#)
[StormReady /](#)
[TsunamiReady](#)
[Skywarn™](#)

Education/Outreach

Information Center

[Tsunamis](#)
[Publications...](#)

Contact Us

[FAQ](#)
[Comments...](#)

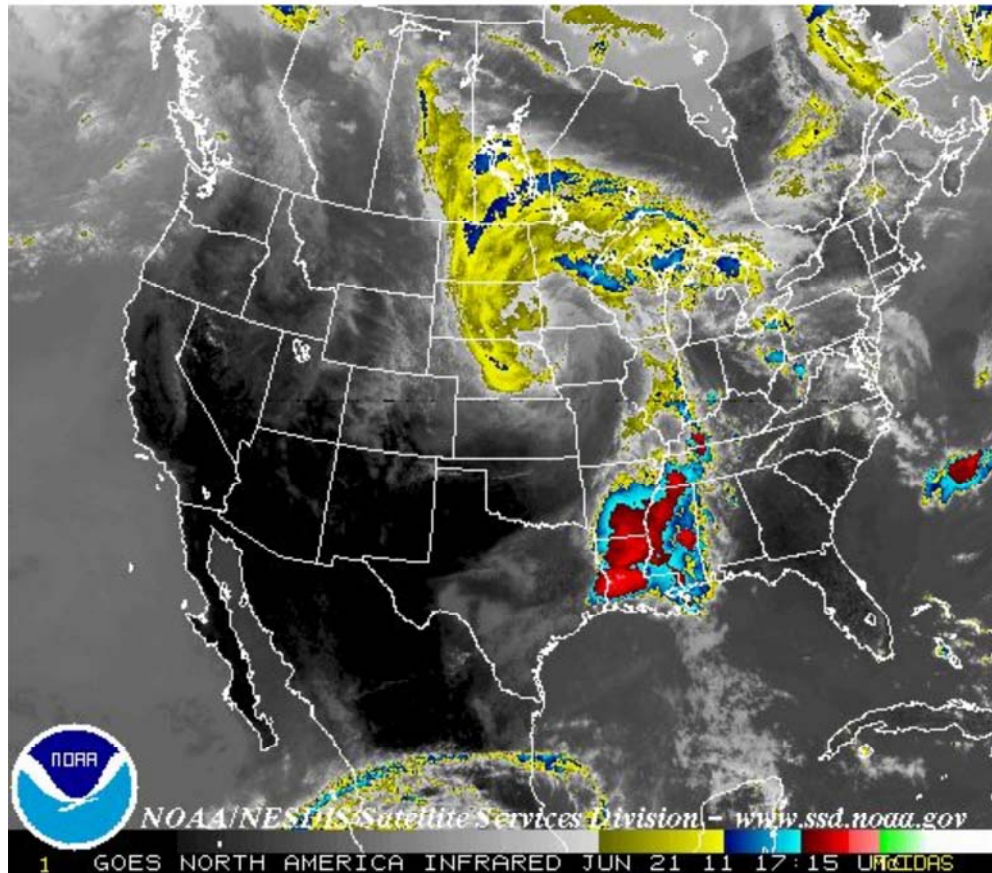


[Home](#) > [Satellite](#) > 24 hour loop

This loop contains the past 24 hours of images of the United States, one image per hour taken from a NOAA satellite. These images are taken in the infrared band of light and show relative warmth of objects. Colder objects are brighter and warmer objects are darker. Lower layers of clouds, generally warmer and lower in altitude, are colored gray. Colder and generally higher clouds tops are highlighted in colors. IR imagery is useful for determining cloud features both at day and night.

[Warnings & Forecasts](#) | [Graphical Forecasts](#) | [National Maps](#) | [Radar](#) | [Water](#) | [Air Quality](#) | [Satellite](#) | [Climate](#)

Infrared **Visible** **Water Vapor**



NOAA NESDIS Satellite Services Division - www.ssd.noaa.gov

1 GOES NORTH AMERICA INFRARED JUN 21 11 17:15 UTC/CDAS

[Static](#) [24 hour Loop](#) [12 hour Loop](#) [6 hour Loop](#) [3 hour Loop](#)

[Alaska](#) | [Hawaii](#) | [Guam](#) | [Puerto Rico](#) | [American Samoa](#) | [Details](#)

US Dept of Commerce
National Oceanic and Atmospheric Administration
National Weather Service
1325 East West Highway
Silver Spring, MD 20910
Page Author: NWS Internet Services Team
Page last Modified: 20 April, 2010 11:34 AM

[Disclaimer](#)
[Information Quality](#)
[Credits](#)
[Glossary](#)

[Privacy Policy](#)
[Freedom of Information Act \(FOIA\)](#)
[About Us](#)
[Career Opportunities](#)