

weather.gov



# National Oceanic and Atmospheric Administration's National Weather Service



[Site Map](#) [News](#) [Organization](#)

Search   NWS  All NOAA

Local forecast by "City, St"

[Home](#) > [Satellite](#) > 24 hour loop

City, St

Sign-up for Email Alerts

[RSS Feeds](#)

**Warnings**

Current

By State/County...

UV Alerts

**Observations**

Radar

Satellite

Snow Cover

Surface Weather...

Observed Precip

**Forecasts**

Local

Graphical

Aviation

Marine

Hurricanes

Severe Weather

Space Weather

Fire Weather

**Text Bulletins**

By State

By Message Type

National

**Forecast Models**

Numerical Models

Statistical Models...

MOS Prod

GFS-LAMP Prod

**Climate**

Past Weather

Predictions

**Weather Safety**

Weather Radio

Hazard Assmt...

StormReady /

TsunamiReady

Skywarn™

**Education/Outreach**

**Information Center**

Tsunamis

Publications...

**Contact Us**

FAQ

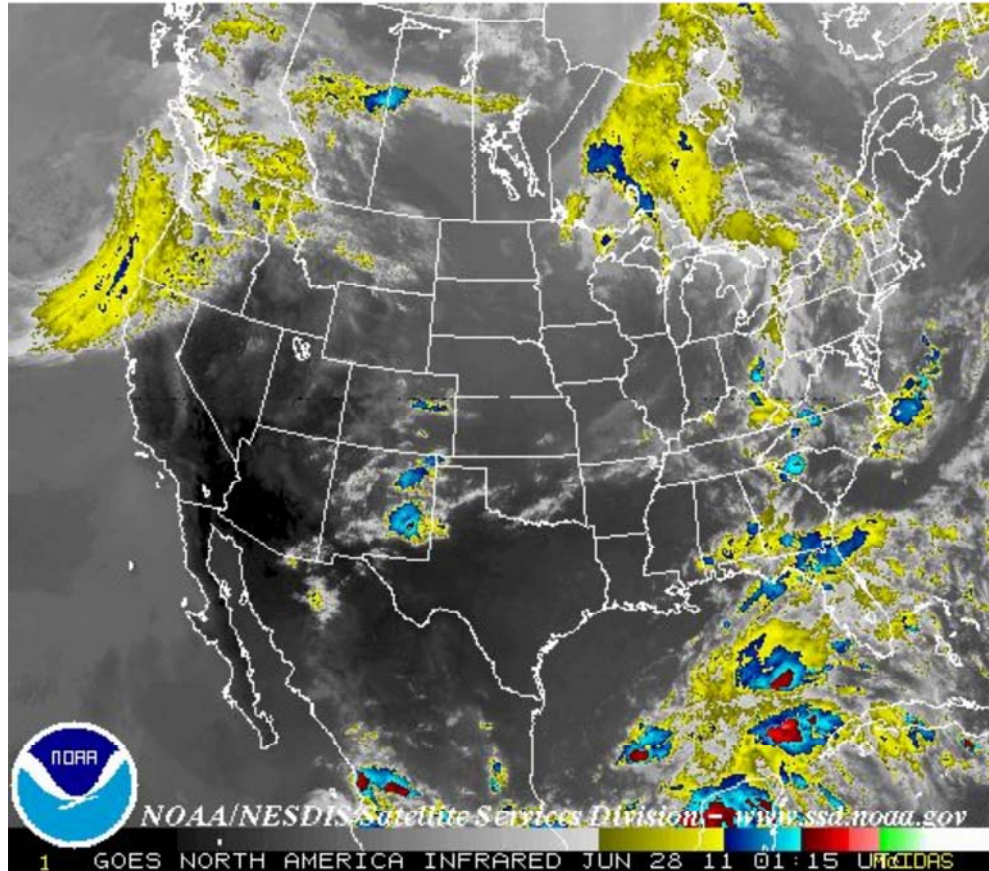
Comments...



This loop contains the past 24 hours of images of the United States, one image per hour taken from a NOAA satellite. These images are taken in the infrared band of light and show relative warmth of objects. Colder objects are brighter and warmer objects are darker. Lower layers of clouds, generally warmer and lower in altitude, are colored gray. Colder and generally higher clouds tops are highlighted in colors. IR imagery is useful for determining cloud features both at day and night.

[Warnings & Forecasts](#) | [Graphical Forecasts](#) | [National Maps](#) | [Radar](#) | [Water](#) | [Air Quality](#) | [Satellite](#) | [Climate](#)

**Infrared**      **Visible**      **Water Vapor**



NOAA/NESDIS Satellite Services Division - www.ssd.noaa.gov  
1 GOES NORTH AMERICA INFRARED JUN 28 11 01:15 UTC/CDAS

[Static](#)   [24 hour Loop](#)   [12 hour Loop](#)   [6 hour Loop](#)   [3 hour Loop](#)

[Alaska](#) | [Hawaii](#) | [Guam](#) | [Puerto Rico](#) | [American Samoa](#) | [Details](#)



**NWS Director Jack  
Hayes on Twitter**

---

US Dept of Commerce  
National Oceanic and Atmospheric Administration  
National Weather Service  
1325 East West Highway  
Silver Spring, MD 20910  
Page Author: NWS Internet Services Team  
Page last Modified: 20 April, 2010 11:34 AM

[Disclaimer](#)  
[Information Quality](#)  
[Credits](#)  
[Glossary](#)

[Privacy Policy](#)  
[Freedom of Information Act \(FOIA\)](#)  
[About Us](#)  
[Career Opportunities](#)