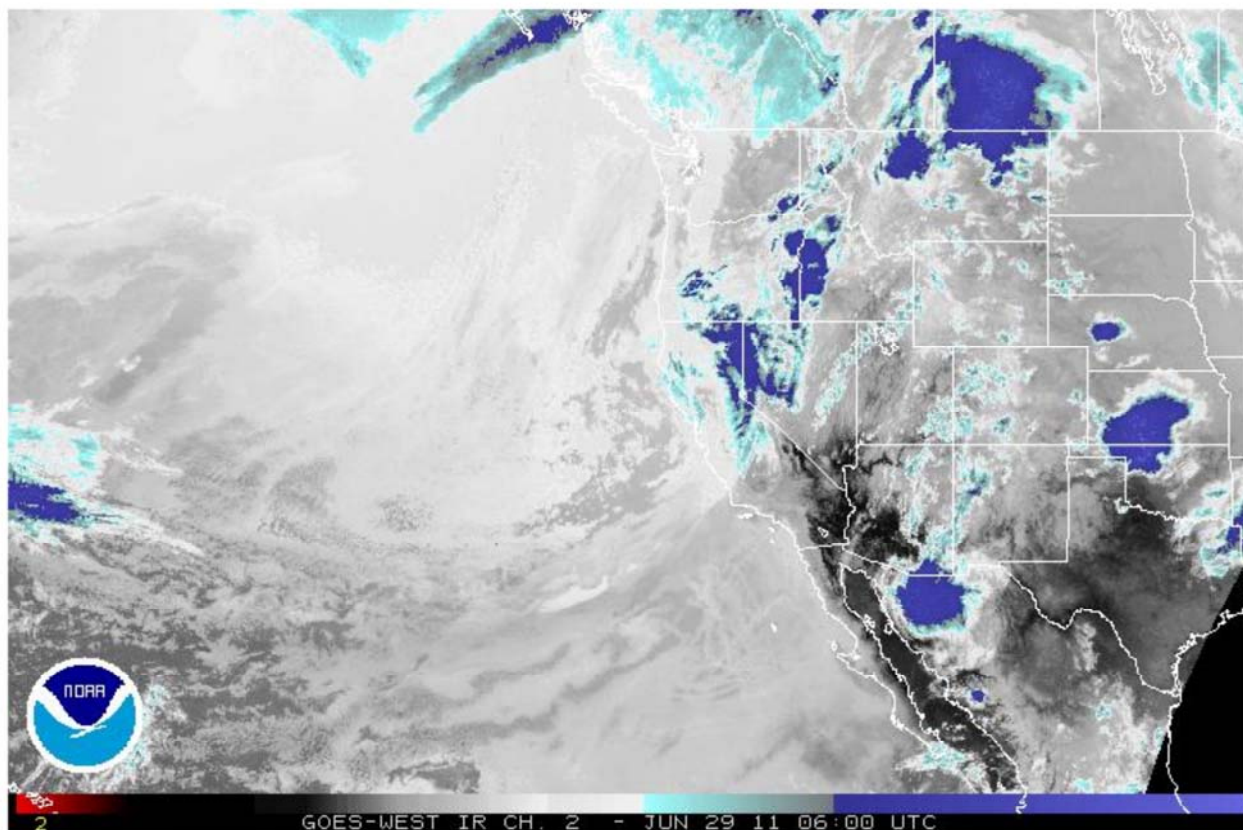


## Western U.S. - Infrared Channel 2

LatLon  HDW-high  HDW-mid  HDW-low  Trop Pts  Fronts  Watch/Warn  SST



GOES-WEST IR CH. 2 - JUN 29 11 06:00 UTC



**This loop intended for informational purposes only!**  
**For Emergency situations and/or decisions, please refer to your local Emergency Management Office.**  
**[Additional Flash Information](#)**