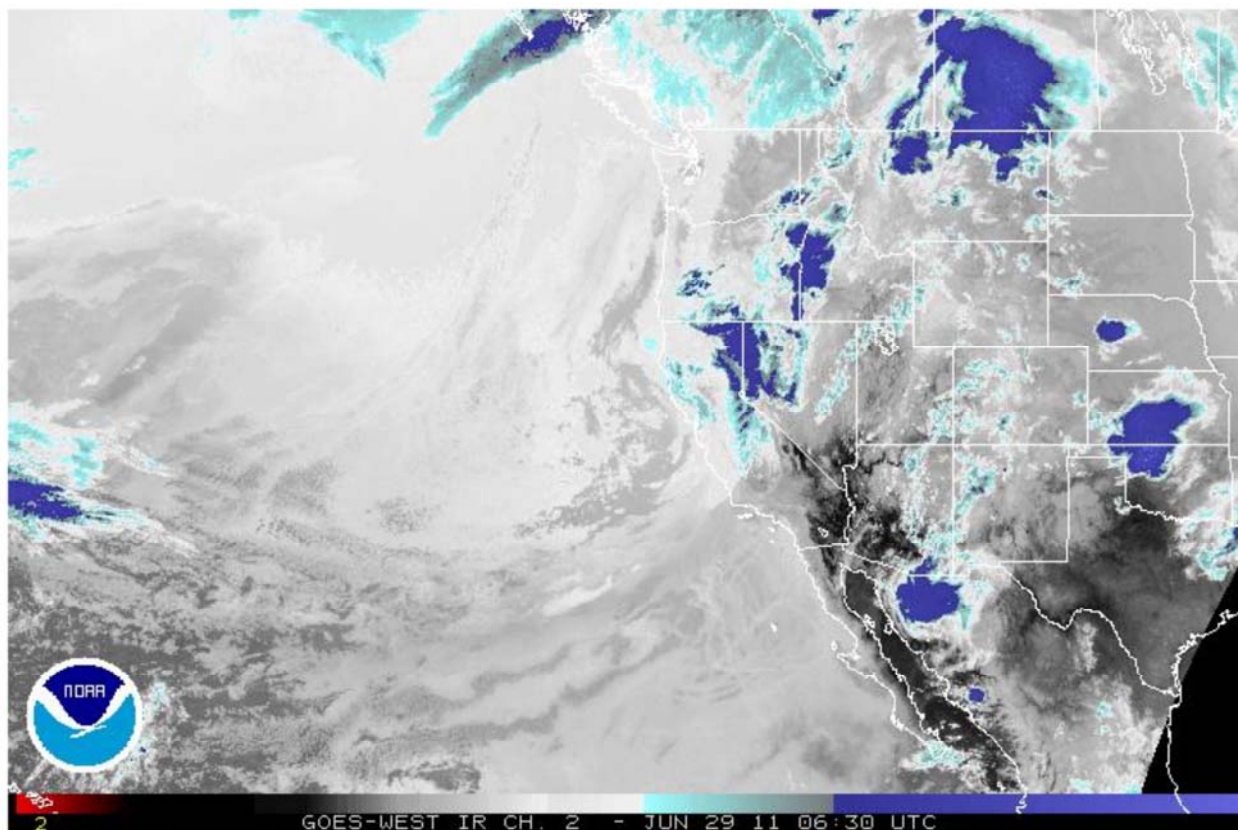


## Western U.S. - Infrared Channel 2

LatLon  HDW-high  HDW-mid  HDW-low  Trop Pts  Fronts  Watch/Warn  SST



**This loop intended for informational purposes only!**  
**For Emergency situations and/or decisions, please refer to your local Emergency Management Office.**

**[Additional Flash Information](#)**

Last Modified: 10/06/2009 11:32:15

You are Here: <http://www.ssd.noaa.gov/goes/west/weus/flash-ir2.html>

Contact Information:

[SSD Webmaster](#)