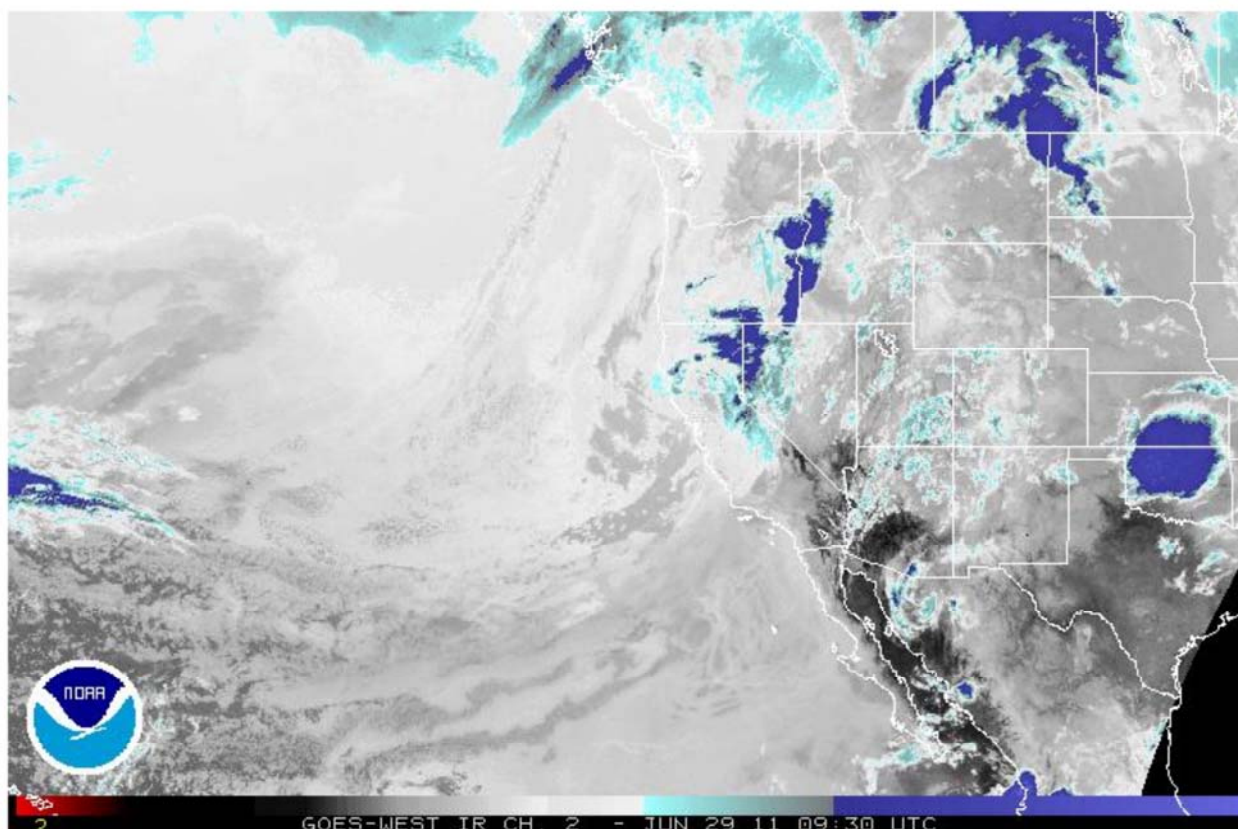


Western U.S. - Infrared Channel 2

LatLon HDW-high HDW-mid HDW-low Trop Pts Fronts Watch/Warn SST



GOES-WEST IR CH. 2 - JUN 29 11 09:30 UTC



This loop intended for informational purposes only!
For Emergency situations and/or decisions, please refer to your local Emergency Management Office.

[Additional Flash Information](#)

Last Modified: 10/06/2009 11:32:15

You are Here: <http://www.ssd.noaa.gov/goes/west/weus/flash-ir2.html>

Contact Information:

[SSD Webmaster](#)