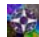




# Unisys Weather

Unisys Weather
Weather Home
Weather Solutions
iPhone App 
Information
Contents
Analyses
Satellite Images
Surface Data
Upper Air Data
Radar Data
Forecasts
Model Statistics
NAM/Wrf Model
GFS/Avn Model
GFSx/MRF Model
RUC Model
ECMWF Model
Archive
Hurricane Data
Archive of Images
USGS Maps

## Visible Satellite - US Current

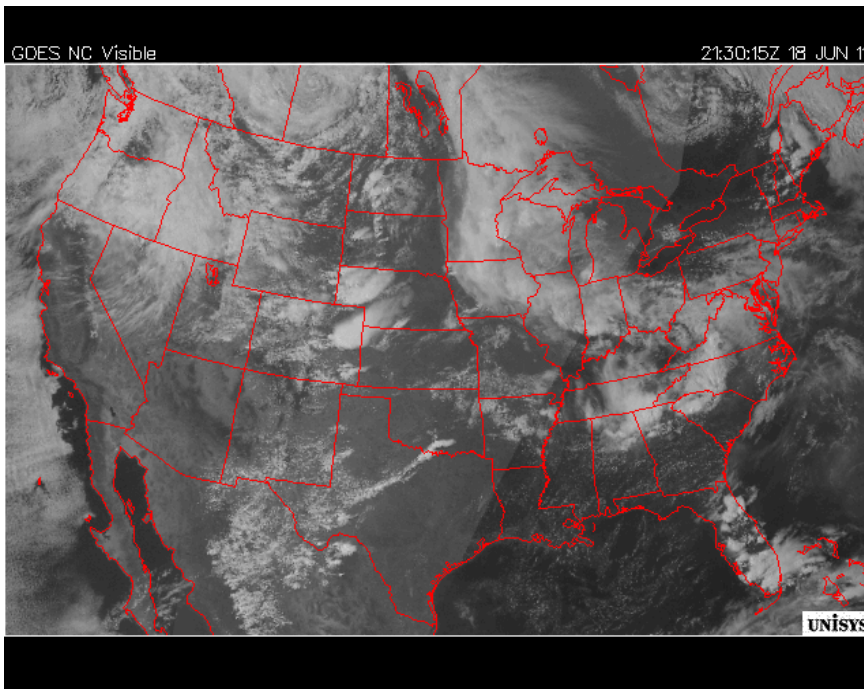
[Menu](#)

IMAGE **Vis** IR Enh IR WV Sfc Rad

TYPE **Norm** Inv

REGION **GOES-E** GOES-W Hem US NE Atl SE MW CPln SPIn NW SW WCan ECan

TIME **Current** -1 hr -2 hr -3 hr -4 hr -5 hr -6 hr -7 hr -8 hr -9 hr -10 hr -11 hr -12 hr L-3 L-12



[Back](#) [Click On the Image For Full Size.](#)

This image is the equivalent of taking a black and white photo of the earth. The bright areas show where the sun is being reflected back into space as a result of clouds or snow cover. Clouds and snow show up white. The thicker the cloud, the brighter the color. Land surfaces show up as gray and ocean surfaces nearly black. The major limitation to visible imagery is that it is only valid during daylight.

### Get a Forecast

Enter a zip code or city name to get forecast:

[GO](#) [SETUP](#)

### NOAA Links

- [National Climatic Data Center](#)
- [Climate Prediction Center](#)
- [National Ocean Service](#)
- [NOAA Library](#)
- [NOAA Office of Oceanic and Atmospheric Research](#)
- [Earth Systems Research Laboratory](#)
- [About Us](#)
- [Overview](#)
- [Contact Us](#)