



# Unisys Weather

- Unisys Weather
- Weather Home
- Weather Solutions
- iPhone App
- Information
- Contents
- Analyses
- Satellite Images
- Surface Data
- Upper Air Data
- Radar Data
- Forecasts
- Model Statistics
- NAM/Wrf Model
- GFS/Avn Model
- GFSx/MRF Model
- RUC Model
- ECMWF Model
- Archive
- Hurricane Data
- Archive of Images
- USGS Maps

## Enh Infrared Satellite - GOES East Current

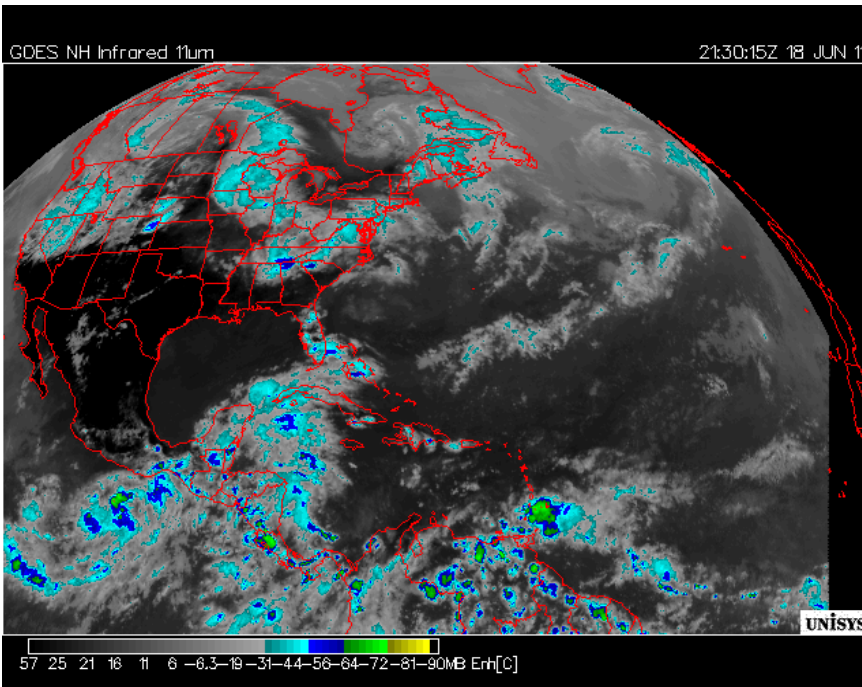
[Menu](#)

IMAGE [Vis](#) [IR](#) [Enh IR](#) [WV](#) [Sfc Rad](#)

TYPE [Norm](#) [Inv](#)

REGION [GOES-E](#) [GOES-W](#) [Hem US](#) [NE](#) [Atl](#) [SE](#) [MW](#) [CPln](#) [SPIn](#) [NW](#) [SW](#) [WCan](#) [ECan](#)

TIME [Current](#) [-1 hr](#) [-2 hr](#) [-3 hr](#) [-4 hr](#) [-5 hr](#) [-6 hr](#) [-7 hr](#) [-8 hr](#) [-9 hr](#) [-10 hr](#) [-11 hr](#) [-12 hr](#) [L-3](#) [L-12](#)



[Back](#)

[Click On the Image For Full Size.](#)

This is an infrared image enhanced to highlight the cloud areas and the coldest cloud tops. Since IR images could be used to determine cloud height, these images are enhanced to highlight the highest, coldest cloud tops. Areas of strong precipitation will show up as shades of cyan. Thunderstorms will show up in blue and green. In addition, the contrast of warmer clouds is increased so that low clouds will show up. A color bar at the bottom of the image will describe the enhancement scheme. The tick marks at the top of the bar represent 10 degree Celsius increments starting at 50C on the left and going to -110C on the right.

### Get a Forecast

Enter a zip code or city name to get forecast:

[GO](#) [SETUP](#)

### NOAA Links

- [National Climatic Data Center](#)
- [Climate Prediction Center](#)
- [National Ocean Service](#)
- [NOAA Library](#)
- [NOAA Office of Oceanic and Atmospheric Research](#)
- [Earth Systems Research Laboratory](#)
- [About Us](#)
- [Overview](#)
- [Contact Us](#)