

The High Frequency Active Auroral Research Program

HAARP

[Home](#)
[About HAARP](#)
[Technical](#)
[On-Line Data](#)
[Learn](#)
[Photos](#)
[Contacts](#)

Data Index

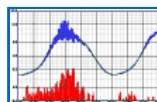
Search the Site

The HAARP Ionospheric Observatory uses numerous [scientific instruments](#) to study the earth's geomagnetic environment and to assess radio propagation conditions. These instruments operate continuously, monitoring and archiving the naturally occurring variations that take place in response to the sun's day-to-day and long term variability. Current geophysical data is available from the scientific instruments in the listing below.

Quick Links

[Select a Page](#)

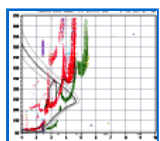

Magnetometer
[Current Chart and Archives](#)
[Magnetometer Chain](#)



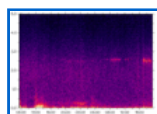
VHF Classic Riometer
[Current Chart and Archives](#)

[Data page for mobile devices](#)

[Home Page](#)
[Site Map](#)
[IRI Performance](#)
[Calculator](#)
[Instrument Listing](#)
[Glossary of Terms](#)



HAARP HF Ionosonde
[Latest Ionogram](#)
[Ionosonde Home Page](#)
[Historical Time Series.](#)



Induction Magnetometer
[Current Chart](#)
[About the Induction Magnetometer](#)

Other Sources of Auroral Data

[Today's Space Weather](#)

[NOAA/POES prediction of Auroral Oval](#)

[GEDDS Data \(Poker Flat\)](#)

[National Geophysical Data Center](#)

[List of Space Weather Data sources](#)

[Polar convection plots](#)

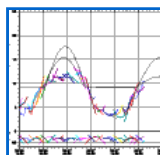
[How to Contact HAARP](#)
[Privacy Statement](#)

Please read the [Cautionary statement](#)

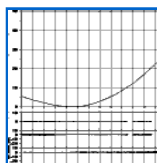
Questions of a technical nature may be submitted via e-mail to:
infohaarp@haarp.alaska.edu

Page updated January 30, 2010

--- Total Electron Content and Scintillation ---

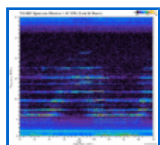


Total Electron Content
[Running TEC Chart](#)
[TEC Archive from GPS](#)



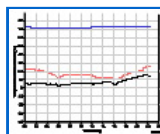
Latitude Scans of TEC and Scintillation
[About TEC](#)
[Archive of Scans](#)

--- Spectrum Monitor Waterfall Charts ---

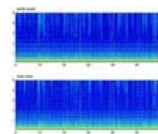


HF Chart (1-30 Mhz)
[NCDXF Beacons \(14.1 MHz\)](#)
[NCDXF Beacons \(18.11 MHz\)](#)

VHF chart (100-200 MHz)
[FM Broadcast Band \(85-110 MHz\)](#)



HAARP Observatory Weather Station
[Current weather conditions and charts](#)



ELF Receivers
[Chistochina, Alaska](#)
[Juneau, Alaska](#)

HAARP All-Sky Imager
[Latest All-Sky Image.](#)
[Image Catalog.](#)

GPS Scintillation Charts from AFRL.
[Ionospheric Scintillation Charts from AFRL.](#)
[Description of GPS Charts.](#)

Pioneering Ionospheric Radio Science Research for the Twenty-First Century



The High Frequency Active Auroral Research Program