

The High Frequency Active Auroral Research Program

HAARP

Home	About HAARP	Technical	On-Line Data	Learn	Photos	Contacts
----------------------	-----------------------------	---------------------------	------------------------------	-----------------------	------------------------	--------------------------

Data Index

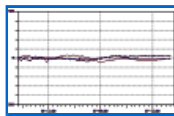
Search the Site

The HAARP Ionospheric Observatory uses numerous [scientific instruments](#) to study the earth's geomagnetic environment and to assess radio propagation conditions. These instruments operate continuously, monitoring and archiving the naturally occurring variations that take place in response to the sun's day-to-day and long term variability. Current geophysical data is available from the scientific instruments in the listing below.

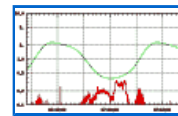
Quick Links

Select a Page

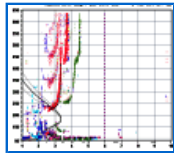
[Home Page](#)
[Site Map](#)
[IRI Performance](#)
[Calculator](#)
[Instrument Listing](#)
[Glossary of Terms](#)



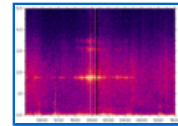
Magnetometer
[Current Chart and Archives](#)
[Magnetometer Chain](#)



VHF Classic Riometer
[Current Chart and Archives](#)



HAARP HF Ionosonde
[Latest Ionogram](#)
[Ionosonde Home Page](#)
[Historical Time Series.](#)



Induction Magnetometer
[Current Chart](#)
[About the Induction Magnetometer](#)

Other Sources of Auroral Data

[Today's Space Weather](#)

[NOAA/POES prediction of Auroral Oval](#)

[GEDDS Data \(Poker Flat\)](#)

[National Geophysical Data Center](#)

[List of Space Weather Data sources](#)

[Polar convection plots](#)

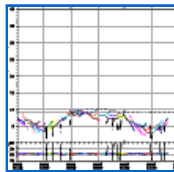
[How to Contact HAARP](#)
[Privacy Statement](#)

Please read the [Cautionary statement](#)

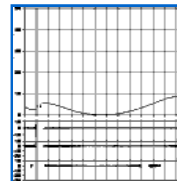
Questions of a technical nature may be submitted via e-mail to:
infohaarp@haarp.alaska.edu

Page updated November 11, 2007

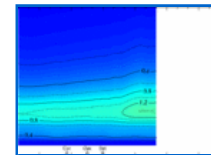
--- Total Electron Content, Tomography, and Scintillation ---



Total Electron Content
[Running TEC Chart](#)
[TEC Archive from GPS](#)

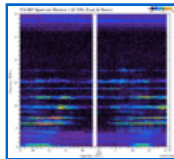


Latitude Scans of TEC and Scintillation
[About TEC](#)
[Archive of Scans](#)



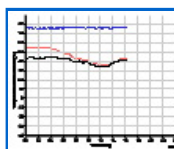
TEC Tomography
[Most Recent Image](#)
[Image Archive](#)

--- Spectrum Monitor ---

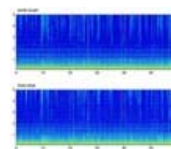


Waterfall Charts
[HF Chart \(1-30 Mhz\)](#)
[VHF chart \(100-200 MHz\)](#)
[NCDXF Beacons \(14.1 MHz\)](#)
[NCDXF Beacons \(18.11 MHz\)](#)

Time Series
[49 meter Broadcast Band](#)



HAARP Observatory Weather Station
[Current weather conditions and charts](#)



ELF Receivers
[Chistochina, Alaska](#)
[Juneau, Alaska](#)

HAARP All-Sky Imager
[Latest All-Sky Image.](#)
[Image Catalog.](#)

GPS Scintillation Charts from AFRL.
[Ionospheric Scintillation Charts from AFRL.](#)

Description of GPS Charts.

Pioneering Ionospheric Radio Science Research for the Twenty-First Century



The High Frequency Active Auroral Research Program