



# National Oceanic and Atmospheric Administration's National Weather Service



Site Map News Organization Search   NWS  All NOAA

Local forecast by "City, St"

Home > Satellite > 24 hour loop

This loop contains the past 24 hours of images of the United States, one image per hour taken from a NOAA satellite. These images are taken in the infrared band of light and show relative warmth of objects. Colder objects are brighter and warmer objects are darker. Lower layers of clouds, generally warmer and lower in altitude, are colored gray. Colder and generally higher clouds tops are highlighted in colors. IR imagery is useful for determining cloud features both at day and night.

City, St

Sign-up for Email Alerts

Feeds

Warnings

Current

By State/County...

UV Alerts

Observations

Radar

Satellite

Snow Cover

Surface Weather...

Observed Precip

Forecasts

Local

Graphical

Aviation

Marine

Hurricanes

Severe Weather

Fire Weather

Text Messages

By State

By Message Type

National

Forecast Models

Numerical Models

Statistical Models...

MOS Prod

GFS-LAMP Prod

Climate

Past Weather

Predictions

Weather Safety

Weather Radio

Hazard Assmt...

StormReady /

TsunamiReady

Skywarn™

Education/Outreach

Information Center

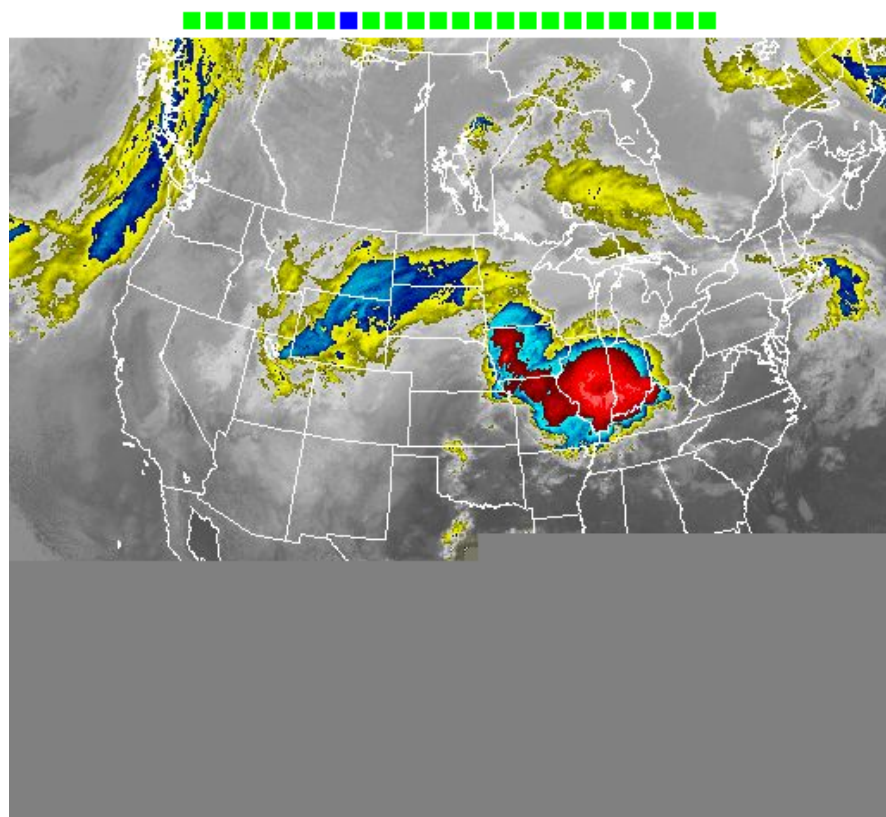
Tsunamis

Publications...

Contact Us

FAQ

Comments...



[Static](#) [24 hour Loop](#) [12 hour Loop](#) [6 hour Loop](#) [3 hour Loop](#)

[Alaska](#) | [Hawaii](#) | [Guam](#) | [Puerto Rico](#) | [American Samoa](#) | [Details](#)



NWS on Facebook

US Dept of Commerce  
National Oceanic and Atmospheric Administration  
National Weather Service  
1325 East West Highway  
Silver Spring, MD 20910  
Page Author: NWS Internet Services Team  
Page last Modified: 20 April, 2010 11:34 AM

Disclaimer  
Information Quality  
Credits  
Glossary

Privacy Policy  
Freedom of Information Act (FOIA)  
About Us  
Career Opportunities