

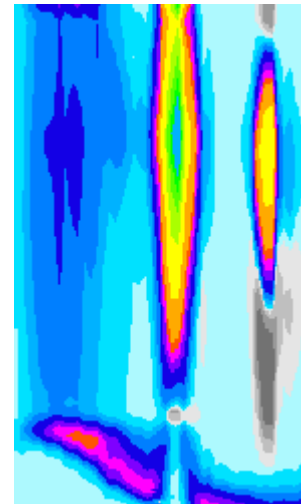
## Science & Research

### Radiative Transfer

The AER Radiation and Climate Group is centrally focused on the study of radiative processes and their relationship to changes in the earth's climate. Particular emphasis is placed on the spectral characteristics of radiative processes to attain a better understanding of radiative effects associated with atmospheric constituents. A principal objective of our research is the interpretation and improvement of climate model performance based on spectral radiative observations. The research efforts have four principal themes:

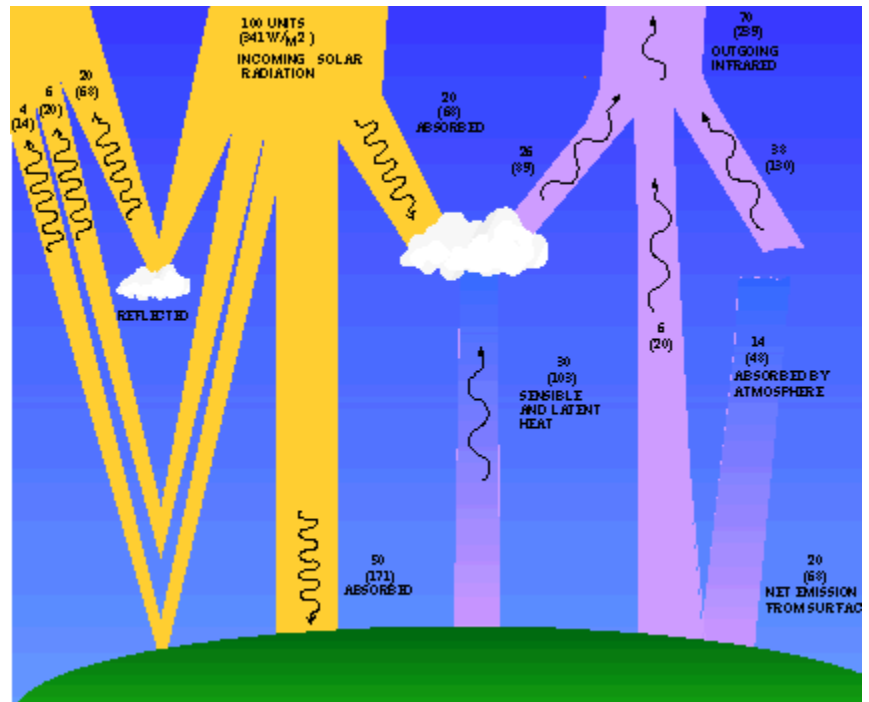
- the development of detailed spectral models incorporating the effects of atmospheric constituents including molecules, clouds and aerosols
- the detailed spectral validation of these models against atmospheric observations
- the development of radiatively accurate but computationally efficient radiative transfer models
- research studies on the effects of improved physics including improved cloud and radiation models

A major effort is directed to the study of spectral cooling rates and the radiative forcing to be expected from effects due both to human and natural influences. This research is currently focused on water vapor, carbon dioxide, ozone and the halocarbons. The studies and related models span the full spectral regime from the microwave to the ultraviolet and include scattering as well as absorption processes. Results of these research efforts have been incorporated into a radiation model for climate studies of cloud-radiation feedback and climate-chemistry interaction.



[Click for larger image](#)

A second area of research is directed to the application of detailed physical models for the retrieval of temperature and constituent profiles from remote sensing spectral measurements. Retrievals from ground based, aircraft and space based measurements are being studied. Particular emphasis is placed on the retrieval of profile information from space based spectral measurements.



The annual mean global energy balance for the earth-atmosphere system

AER has developed many publicly available radiative transfer models the LBLRTM, RRTM, MonoRTM, and the continuum model (MT-CKD). For redevelopments and more information on our models and databases please visit <http://www.rtweb.aer.com>. The research program of the AER Radiation is principally supported by the Department of Energy and the Jet Propulsion Laboratory/National Aeronautics and Space Administration.

[More about Radiation & Climate](#)

[To learn more about this product](#)

| [Home](#) | [About Us](#) | [Science & Research](#) | [Products & Services](#) | [News](#) | [Contact Us](#) | [Site Map](#) | [Privacy & Legal](#) |  
 © Atmospheric and Environmental Research, Inc. 2002, 2003, 2004, 2005, 2006. All Rights Reserved. [Request Information](#)